

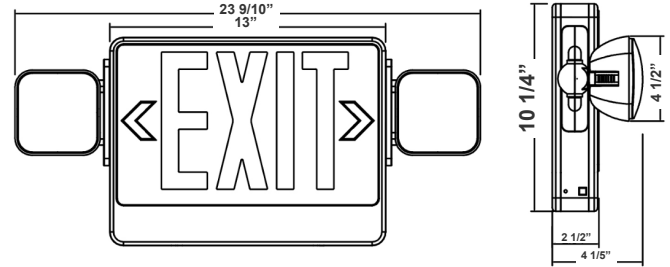
XTU SERIES Exit & Emergency Lighting

XTU-CL-RG-EM-BK
SUPER SLIM LED EXIT SIGN

WESTGATE
THE FUTURE IS HERE...AND IT'S QUITE BRIGHT!



Customer Name: _____
Project Name: _____
Note: _____ | Type: _____



23 9/10" (W) x 10 1/4" (H) x 4 1/5" (D)

Exit signs shall be provided at every exit door, at the intersection of corridors, at exit stairways or ramps and such other locations and intervals as are necessary to provide the occupants with knowledge of the various means of egress available

Features

- 3-Year Warranty
- Maximum 24 hours For Full Recharge Time
- Injection-Molded Thermoplastic ABS Housing And Polycarbonate Cover, UL 94V-0 Flame Rating

Technical Specifications

Electrical:

- 120V/277V AC Dual Voltage Operation
- Light Head Wattage: 2.4W Per Head
- Sign Wattage: 3.5W
- Input Power: 2.90-3.79W
- AC Charging Current: 32mA
- Fully Automatic Solid-State, Two Rate Charger Initiates Battery Charging to Recharge a Discharged Battery in 24 Hours
- Built-in 3.6V1200mAh Ni-Mh Battery for Minimum 90 Minutes Emergency Operation

Mechanical:

- Injection-Molded Thermoplastic ABS Housing And Polycarbonate Cover, UL 94V-0 Flame Rating
- Red & Green Lenses Are Included. The Default Is Red
- To Change Color Of The Sign Change The Lens & Flip The Color Switch Inside
- Single or Double Face (Universal)
- Letters 6" Height With 3/4" stroke
- Operating Temperature: 32° F~104°F
- Maximum 24 Hours For Full Recharge Time
- Universal J-box mounting pattern
- Injection-Molded Thermoplastic ABS Housing And Polycarbonate Cover, UL 94V-0 flame Rating
- Innovative, Easy Installation in Minutes
- IP20, Indoor Use Only

Lighting:

- Color Temperature: 6132K
- Total Lumens: 8 (AC)/ 272 (DC)
- Ultra Bright Red LEDs
- Internal Solid-State Transfer Switch Automatically Connects The Internal Battery to LED Board for Minimum 90-Minute Emergency Illumination
- Charge Rate/Power "ON" LED Indicator Light And Push-to-Test Switch For Mandated Code Compliance Testing

Applications:

- Ideal for every exit door, at the intersection of corridors, at exit stairways or ramps and such other locations

Other Models:

- 3.5W | XTU-CL-RG-EM

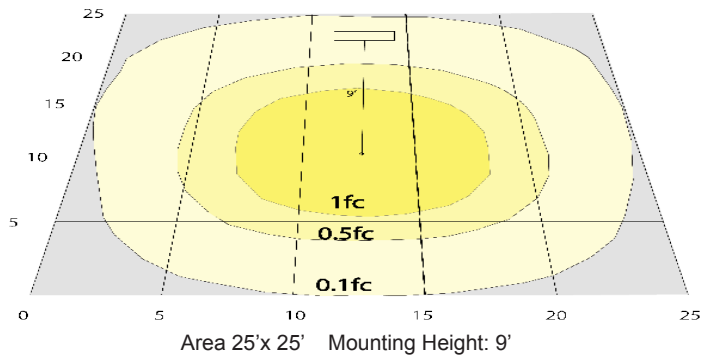
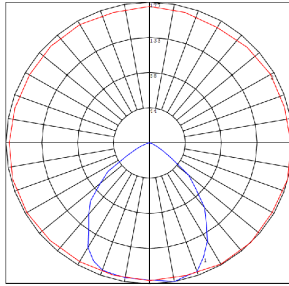
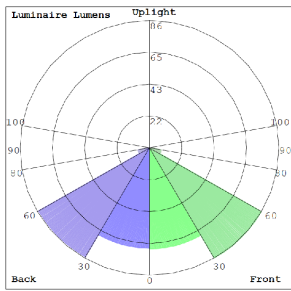


Phone: (877) 805-2252 | Fax: (877) 805-2252
www.westgatemfg.com |



WG-11182022

Photometrics: XTU-CL-RG-EM-BK



BUG Rating: B0-U1-G0

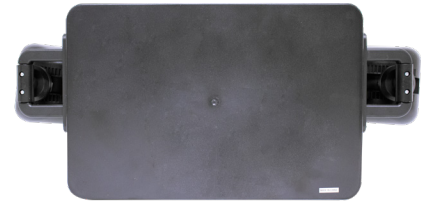
Other Views:



Side View



Front View



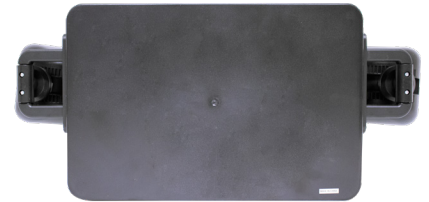
Back View



Side View



Front View



Back View

Performance Table: XTU-CL-RG-EM-BK

MODEL NO.	Wattage	Voltage	Lumens	Color Temp.	BUG Rating	LPW
XTU-CL-RG-EM-BK	3.5W Per Head	120~277V	8 (AC) 272 (DC)	6132K	B0-U1-G0	3 (AC) 113 (DC)

Sample Ordering

Model Style Color Emergency Finish

XTU - CL - RG - EM - BK

Other Models:



XTU-CL-RG-EM

