

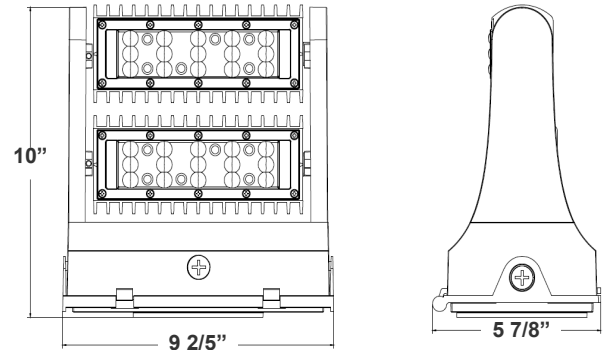
LW360 SERIES Outdoor Lighting

LW360-60W-30K-G2
LW360-60W-40K-G2
LW360-60W-50K-G2
LED 360° ROTATABLE WALL PACK

Customer Name: _____
Project Name: _____
Note: _____ Type: _____



Selection:



10"(H) x 9 2/5"(W) x 5 7/8"(L)

Ideal for general site lighting, alleys, loading docks, doorway, pathway, and parking areas.

Features

- Rotatable Heads (Both in 60W & 80W) With Set Screw
- Three 1/2" Threaded Knockouts: 1 Bottom. 1 On Each Side
- Light Head rotates 350°
- Die-cast aluminum housing with powder coat finish (Dark Bronze or White)
- 7-Year Warranty

Technical Specifications

Electrical:

- Voltage: 120-277VAC 60Hz
- Wattage: 60W
- Power Factor: >0.95
- Efficacy: 130 LPW

Mechanical:

- Die-Cast Aluminum With Powder Coat Finish (Dark Bronze)
- Light Head rotates 350°
- Includes Mounting Hardware
- Operating Temperature: -40°F -104°F
- Five 1/2" Threaded Knockouts: 1 on Each Side, 1 on The Back
- 7-Year Warranty
- IP65, Suitable for Wet Locations

Lighting:

- Chip: Philips Lumileds LEDs
- TIR Optic Lens - TYPE II
- Dimmable: 0~10V Dimming
- Total Lumens: 7800LM
- Color Temperatures: 3000K/ 5000K
- Color Rendering Index: CRI ≥ 80
- Beam Angle: 60°
- Rated life: 70,000 Hrs

Applications:

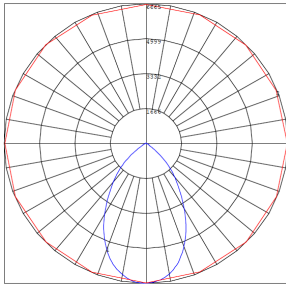
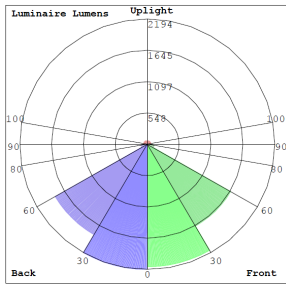
- General site Lighting
- Alleys
- Loading docks
- Doorways
- Pathways
- Parking areas

Other Models:

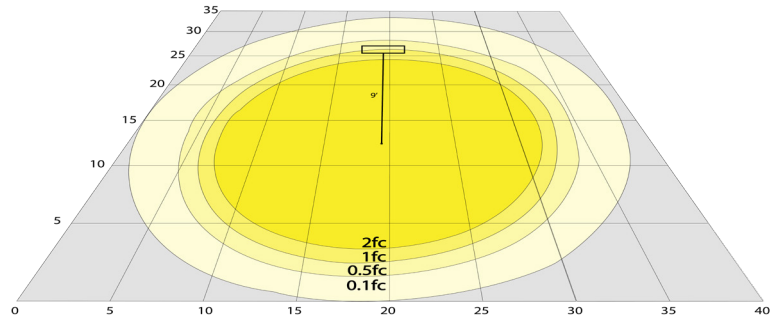
- | | | | |
|-----------------------------------|-----------------------------------|-----------------------------------|--------------------------------------|
| • 25W 3250LM LW360-25W-30K-G2 | • 40W 5200LM LW360-40W-30K-G2 | • 60W 7800LM LW360-60W-30K-G2 | • 120W 15600LM LW360-120W-30K-G2 |
| • 25W 3250LM LW360-25W-40K-G2 | • 40W 5200LM LW360-40W-40K-G2 | • 60W 7800LM LW360-60W-40K-G2 | • 120W 15600LM LW360-120W-40K-G2 |
| • 25W 3250LM LW360-25W-50K-G2 | • 40W 5200LM LW360-40W-50K-G2 | • 60W 7800LM LW360-60W-50K-G2 | • 120W 15600LM LW360-120W-50K-G2 |



Photometrics: LW360-60W



BUG Rating: B3-U3-G1



Area 35'x 40' Mounting Height: 9'

Other Views:



Side View



Front View



Back View

Performance Table: LW360-60W

MODEL NO.	Wattage	Voltage	Lumens	Color Temp.	BUG Rating	LPW
LW360-60W-30K-G2	60W	120~277V	7800LM	3000K	B3-U3-G1	130
LW360-60W-40K-G2	60W	120~277V	7800LM	4000K	B3-U3-G1	130
LW360-60W-50K-G2	60W	120~277V	7800LM	5000K	B3-U3-G1	130

Sample Ordering

Model	Wattage	Color Temp.	Series
LW360	60W	3000K 4000K 5000K	G2

Accessory:

Blank = No Option For Accessories

LW360-SH1= SHROUD FOR LW360 SERIES, BRONZE FINISH

Factory-Installed Options:

Blank = No Option For Accessories

OPT-EM-LW360= EMERGENCY BACKUP BATTERY, BACK BOX

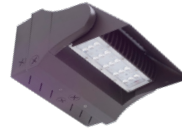
OPT-SEN-LW360-3MRLV-5= PROGRAMMABLE MICROWAVE BI-LEVEL

OPT-CLR-85= COLOR PAINT

OPT-LW360-PC-B = PHOTOCELL 120-277V

WEC-8RC = OPTIONAL REMOTE

ACCESSORY:



LW360-SH1

FACTORY-INSTALLED OPTIONS:



OPT-EM-LW360-LG



WEC-8RC



OPT-LW360-PC-B



OPT-SEN-LW360-3MRLV-5

Example:

1. LW360-60W-30K-G2

(FOR LW360 60W 3000K FIXTURE 120-277V)

2. LW360-60W-30K-G2
LW360-SH1

(FOR LW360 60W 3000K FIXTURE 120-277V)
(SHROUD FOR LW360 SERIES, BRONZE FINISH)

3. LW360-60W-30K-G2
LW360-SH1
OPT-EM-LW360

(FOR LW360 60W 3000K FIXTURE 120-277V)
(SHROUD FOR LW360 SERIES, BRONZE FINISH)
(EMERGENCY BACKUP BATTERY, BACK BOX)



COLOR CHART: * Choose from one of our Premium Colors with no set-up fee.

Gloss:



SILVER METALLIC
70 GLOSS
T357-GR105



SILVER METALLIC
30 GLOSS
T353-GR06



DARK RED 90
GLOSS
P009-RD02



INTERNATIONAL
ORANGE 90
GLOSS
T009-OG26



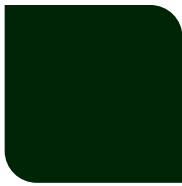
SAFETY ORANGE
90 GLOSS
T009-OG01



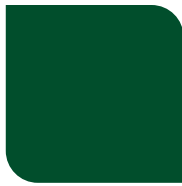
YELLOW 90
GLOSS
T009-YL14



YELLOW 90
GLOSS
T009-YL01



TRAFFIC GREEN
70 GLOSS
T007-GN16



GREEN 70 GLOSS
T007-GN13



GREEN 60 GLOSS
C006-GN03



BLUE 90 GLOSS
T009-BL01



DARK BLUE 80
GLOSS
T008-BL20



RAL 8028 TERRA
BROWN 90 GLOSS
C209-BR358

Hammer:



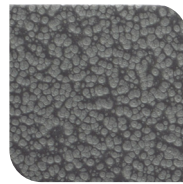
WHITE HAMMER
T013-WH09



BEIGE HAMMER
T013-BG38



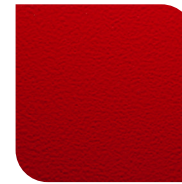
GREY HAMMER
C013-GR08



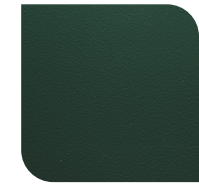
SILVER
HAMMERTONE
T064-GR05



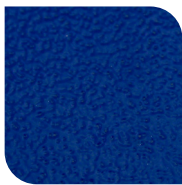
BLACK HAMMER
T013-BK62



RED HAMMER
T013-RD15



GREEN HAMMER
T013-GN220



BLUE HAMMER
T013-BL468



BRONZE HAMMER
T012-BR161

Texture:



WHITE TEXTURE
C031-WH120



FLINT GRAY
TEXTURE
T243-GR522



BLACK TEXTURE
C241-BK109



RED TEXTURE
T241-RD129



BLUE TEXTURE
C241-BL544

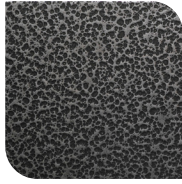


OIL RUBBED
BRONZE TEXTURE
T291-BR251

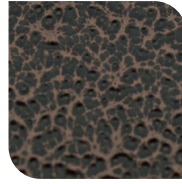
Vein:



BLACK/WHITE
VEIN
T075-WH34



SILVER VEIN
T375-BK26



COPPER VEIN
EXTERIOR
T075-BK211



GOLD VEIN
T375-BK10



COPPER VEIN
T375-BK07

