



Low on cost. High on utility.

HAYBAY™



RAB's warranty is subject to all terms and conditions located at rablighting.com/warranty.



Visit rablighting.com to see which models are DLC listed.

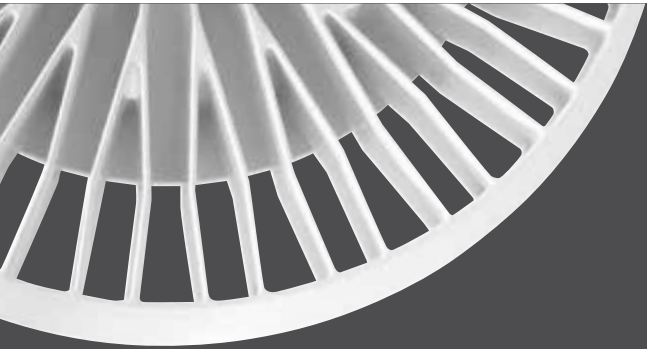
RAB®

Indoor



Your budget. Your choice.

HAYBAY is designed for a world of flexibility by keeping your base price low and letting you choose options as you need them, like reflectors, motion sensors and emergency batteries.

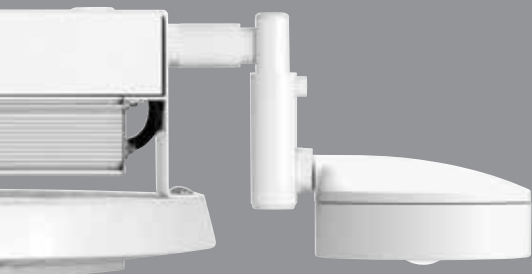


Open "airflow" design reduces operating temperature and increases lifespan.

An assortment of reflectors tailor the HAYBAY to specific applications: downlight only, uplight + downlight, and high or low mounting heights.



Available in clear and frosted finishes



Available with a Lightcloud® Controller, Lightcloud® Sensor, and other compatible RAB sensors for additional energy savings

Specifications

UL Listing: Suitable for damp locations

Vibration Rating: Industry-leading 5G vibration rating per ANSI C136.31.

LEDs: Long-life, high-efficiency, surface mount LEDs

Lifespan: 100,000-hour LED lifespan based on IES LM-80 results and TM-21 calculations

Drivers:

180W: Class 1, programmable, constant current, 50/60 Hz., 120-277V, 1.5A @ 120V, 0.87A @ 208V, 0.75A @ 240V, 0.65A @ 277V; THD<10%, PF>95%

150W: Class 1, programmable, constant current, 50/60 Hz., 120-277V, 1.25A @ 120V, 0.73A @ 208V, 0.63A @ 240V, 0.55A @ 277V; THD<10%, PF>95%

130W: Class 1, programmable, constant current, 50/60 Hz., 120-277V, 1.09A @ 120V, 0.63A @ 208V, 0.55A @ 240V, 0.47A @ 277V; THD<10%, PF>95%

100W: Class 2, constant current, 50/60 Hz., 120-277V, 0.84A @ 120V, 0.48A @ 208V, 0.42A @ 240V, 0.37A @ 277V; THD<10%, PF>95%

	HAYBAY 180W		HAYBAY 130W	
Color Temperature	5000K	4000K	5000K	4000K
Input Watts	180	179	137	134
Output Lumens	27,051	27,146	19,721	20,580
Lumens Per Watt	150	151	144	154
Color Accuracy (CRI)	72	74	72	72

	HAYBAY 150W		HAYBAY 100W	
Color Temperature	5000K	4000K	5000K	4000K
Input Watts	156	155	102	101
Output Lumens	23,195	23,560	15,509	15,785
Lumens Per Watt	149	152	152	156
Color Accuracy (CRI)	72	72	72	72

Dimming: 0-10V dimming, standard

Ambient Temperature: Suitable for use 12 hours a day, 5 days a week in ambient temperatures up to 50° C and for 24/7 use in ambient temperatures up to 40° C.

Emergency Battery Backup: Available as an option

Housing: Precision die-cast aluminum with sheet metal driver bracket/mounting

Mounting: Heavy-duty 3/4" NPS hook and 6 ft. cord; is also 3/4" pendant mount-capable (*pendant by others*).

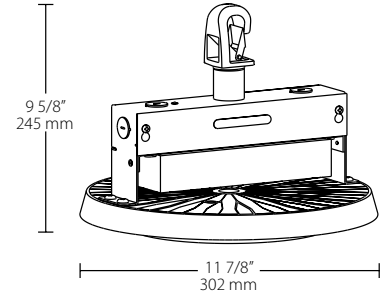
Reflector Options: Clear prismatic acrylic reflectors available in 11" or 8.5" height; white frosted acrylic reflectors available in 11" height; frosted prismatic acrylic reflectors available in 11" or 8.5" height; white aluminum reflector available in 5" height.

Finish: Our environmentally friendly polyester powder coatings are formulated for high durability and long-lasting color, and contain no VOC or toxic heavy metals.

Note: Performance shown for HAYBAY with R16SP reflector. For other performance visit rablighting.com

Dimensions & weight

Weight: 14.7 lbs



Reflectors

R16AR
Clear Prismatic
Acrylic Reflector
(11" high)



R16WF
White Frosted
Acrylic Reflector
(11" high)



R16PF
Frosted Prismatic
Acrylic Reflector
(11" high)



R16SP
Short Clear
Prismatic Acrylic
Reflector (8.5" high)



R16SPF
Short Frosted
Prismatic Acrylic
Reflector (8.5" high)



R16SA
Short White Aluminum
Reflector (5" high)



Reflector accessories (*require reflector*)*

DL16
Clear Prismatic Acrylic
Drop Lens w/Clamp Band



GDB16
Wire Guard



* Can only affix one accessory to a reflector.

Ordering information

Product Family	Wattage	Color Temp.	Driver	Sensor Options	Options																												
HAYBAY	<table border="1"> <tr><td>180</td><td>180W</td></tr> <tr><td>150</td><td>150W</td></tr> <tr><td>130</td><td>130W</td></tr> <tr><td>100</td><td>100W</td></tr> </table>	180	180W	150	150W	130	130W	100	100W	<table border="1"> <tr><td>Blank</td><td>5000K</td></tr> <tr><td>N</td><td>4000K</td></tr> </table>	Blank	5000K	N	4000K	/D10	<table border="1"> <tr><td>Blank</td><td>No Sensor</td></tr> <tr><td>/LOS</td><td>LOS BAY 800 Sensor**†</td></tr> <tr><td>/LOS R</td><td>LOS BAY 800 Sensor† (designed for use with a reflector)</td></tr> <tr><td>/LCS</td><td>Lightcloud® Sensor**</td></tr> <tr><td>/LCS R</td><td>Lightcloud® Sensor (designed for use with a reflector)</td></tr> <tr><td>/LC</td><td>Lightcloud® Controller</td></tr> </table>	Blank	No Sensor	/LOS	LOS BAY 800 Sensor**†	/LOS R	LOS BAY 800 Sensor† (designed for use with a reflector)	/LCS	Lightcloud® Sensor**	/LCS R	Lightcloud® Sensor (designed for use with a reflector)	/LC	Lightcloud® Controller	<table border="1"> <tr><td>Blank</td><td>None</td></tr> <tr><td>/E2</td><td>Emergency Backup, 120-277V</td></tr> </table>	Blank	None	/E2	Emergency Backup, 120-277V
180	180W																																
150	150W																																
130	130W																																
100	100W																																
Blank	5000K																																
N	4000K																																
Blank	No Sensor																																
/LOS	LOS BAY 800 Sensor**†																																
/LOS R	LOS BAY 800 Sensor† (designed for use with a reflector)																																
/LCS	Lightcloud® Sensor**																																
/LCS R	Lightcloud® Sensor (designed for use with a reflector)																																
/LC	Lightcloud® Controller																																
Blank	None																																
/E2	Emergency Backup, 120-277V																																

**Not for use with reflectors.

† LOS BAY 800 Sensor is for 120V or 277V use only.