



XFIT



KT-WPLED20-S1-8CSB-VDIM /EM4

SMALL NON-CUTOFF WALL PACK WITH BATTERY BACK UP

DESCRIPTION

20W Non-Cutoff Wall Pack with Built-in Emergency | 120-277V Input |
Color Select | Bronze Finish | Impact Resistant Lens

APPLICATION

Building mount for exterior illumination (entryways, pathways,
stairwells, security, and other general site lighting requirements)



10 YEAR
LIMITED WARRANTY



PRODUCT FEATURES

- Keystone Color Select technology (3000/4000/5000K)
- Includes integrated 4W 550 lumen emergency back up and test switch
- Small non-cutoff design can be mounted anywhere, offering uniform vertical and horizontal distribution pattern for general safety and security illumination needs
- Heavy duty die cast aluminum housing with (3) 1/2" threaded conduit hubs: (1) on back and (1) on each side
- Impact resistant, highly diffused polycarbonate lens with anti yellowing agent for reduced glare at low mounting heights
- Built-in dusk-to-dawn photocell behind translucent 1/2" threaded plug with anti-yellowing agent
- ADA compliant with low-profile housing less than 4" deep
- Powered by Keystone 0-10V dimming LED drivers, dimmable to 10%
- Ambient operating temperature: 0°C/32°F to 45°C/113°F
- UL Certified for wet locations; IP65 rated
- Fixture impact rating IK07
- Power Factor: > 0.95
- THD: < 20%
- LED chip lifetime: L70 >100,000 hrs @ 25°C/77°F ambient fixture temp
- Meets FCC Part 15, Part B, Class A standards for conducted and radiated emissions

PRODUCT SPECIFICATIONS

Catalog Number	Wattage	Lumens	Lumens Below 90°	CCT*	Efficacy	Dimming	Emergency Wattage	Emergency Lumen Input	Rated Life	Legacy Equivalent
KT-WPLED20-S1-8CSB-VDIM /EM4	20W	2600	2340	3000K	130 lm/W	0-10V	4W	550	50,000 hrs	50-70W MH
		2700	2430	4000K	135 lm/W					
		2500	2330	5000K	125 lm/W					

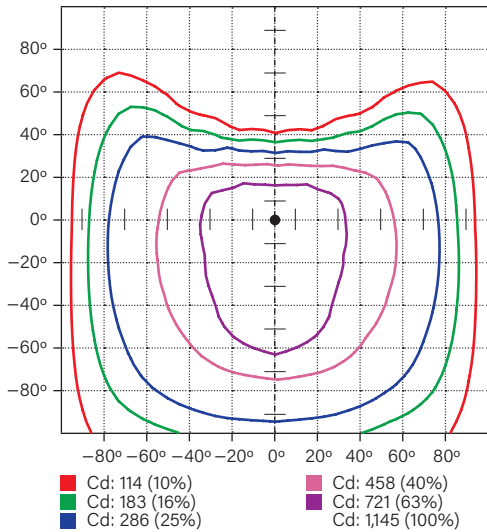
* Color Uniformity: CCT (Correlated Color Temperature) range as per guidelines outlined in ANSI C78.377-2017

KT-WPLED20-S1-8CSB-VDIM / EM4

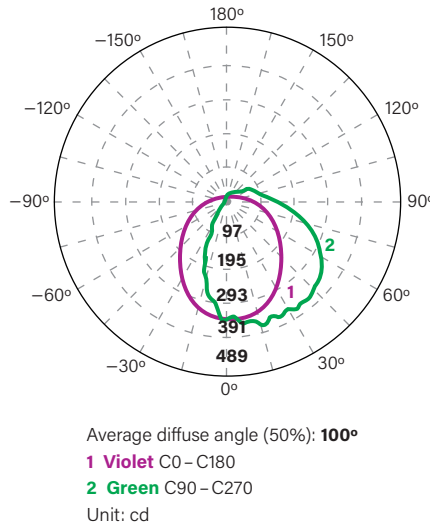
SMALL NON CUTOFF WALL PACK WITH BATTERY BACK UP

PHOTOMETRIC SPECIFICATIONS

ISOCANDELA PLOT



LUMINOUS INTENSITY DISTRIBUTION



FLUX DISTRIBUTION

Zone	Lumens	% Luminaire
Forward Light	1,653 lm	64.0%
0°-30°	379 lm	14.7%
30°-60°	758 lm	29.4%
60°-80°	400 lm	15.5%
80°-90°	116 lm	4.5%
Back Light	667 lm	25.8%
0°-30°	264 lm	10.2%
30°-60°	283 lm	11.0%
60°-80°	97 lm	3.8%
80°-90°	23 lm	0.9%
Up Light	261 lm	10.1%
90°-100°	92 lm	3.5%
100°-180°	170 lm	6.6%

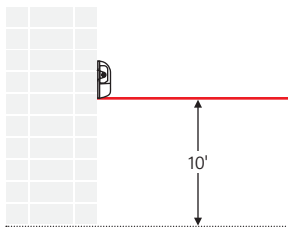
BUG* Rating

Asymmetrical Luminaire Types	
Type I, II, III, IV	B1 U3 G1
Quadrilateral Symmetrical Luminaire Types	
Type V, Area Light	B1 U3 G1

* Backlight, Uplight, Glare

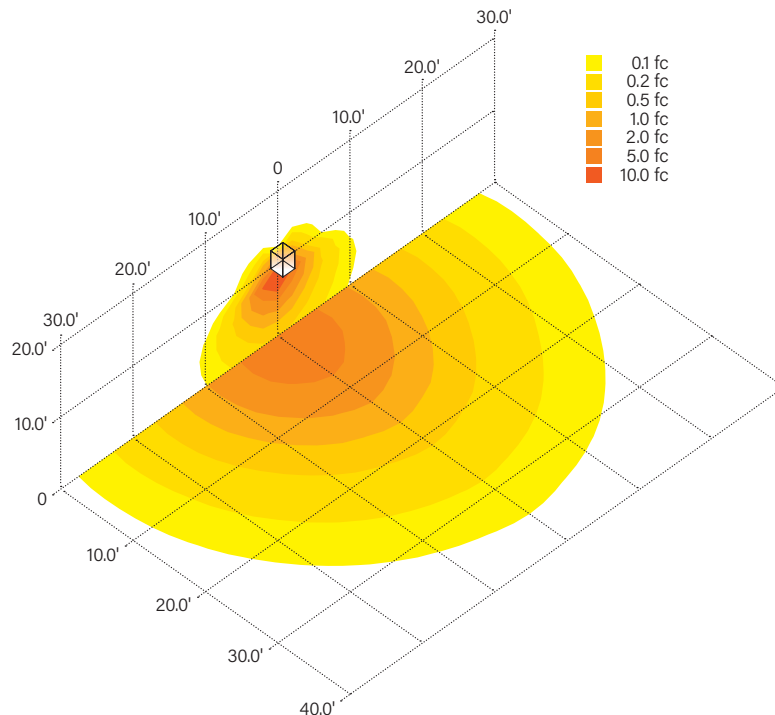
MOUNTING

Side view



LIGHT DISTRIBUTION PATTERN

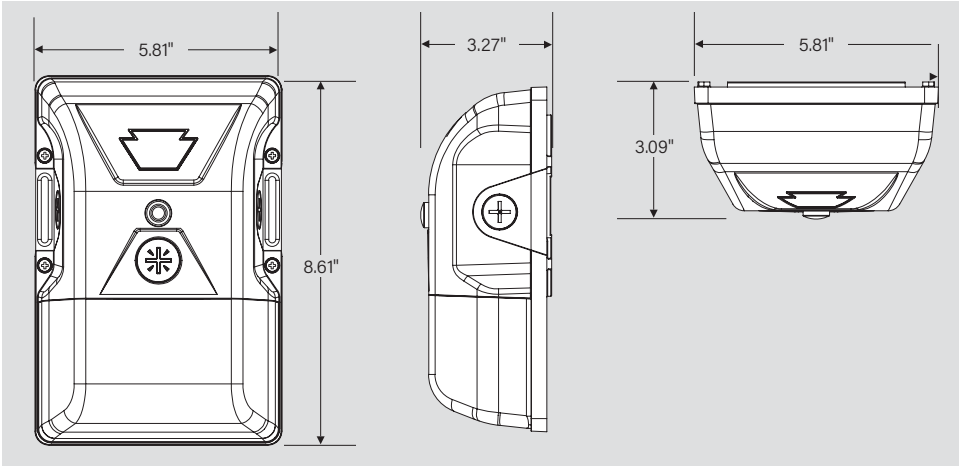
Isometric view from above; Luminaire mounted at 10'



KT-WPLED20-S1-8CSB-VDIM / EM4

SMALL NON CUTOFF WALL PACK WITH BATTERY BACK UP

PHYSICAL SPECIFICATIONS

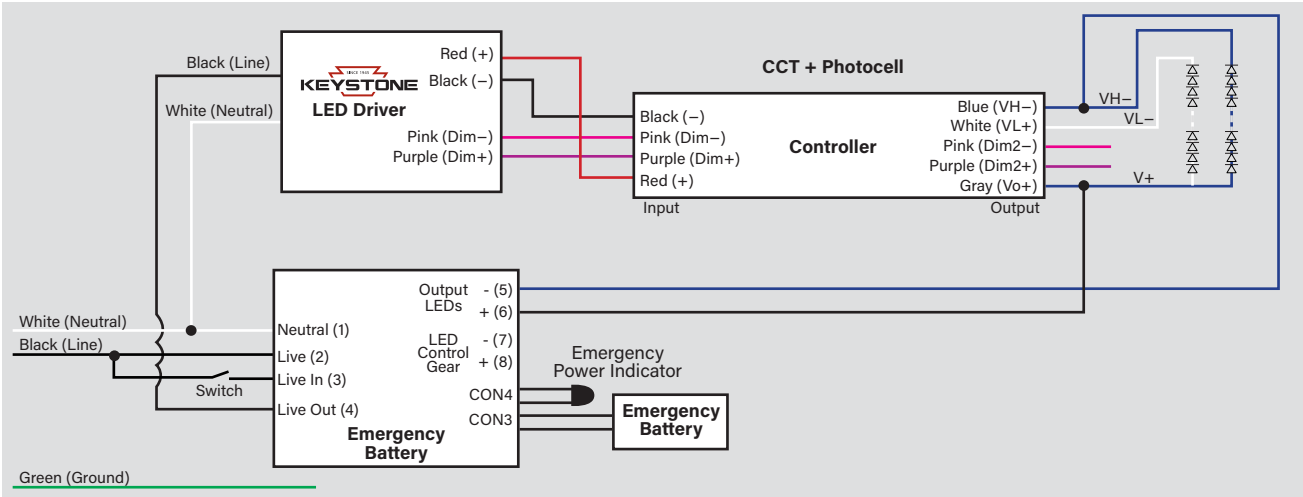


Caution: Before installing, make certain that AC power to the fixture is off.

Caution: The electrical rating of this product is 120-277V. Installer must confirm that there is 120-277V at the fixture before installation.

GENERAL SETUP INSTRUCTIONS

GENERAL WIRING DIAGRAM

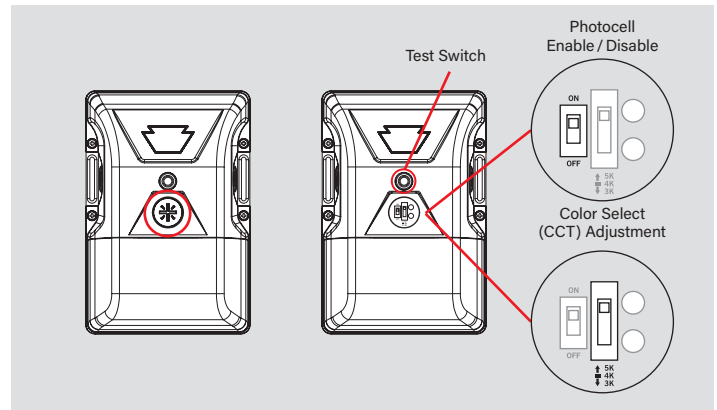


PHOTOCELL ENABLE / DISABLE

This fixture is equipped with a dusk-to-dawn photocell behind the translucent knock-out (KO) cover. Adjust the dip switch to enable (ON) or disable (OFF) the photocell function (see illustrations to the right). Fixture comes preset with photocell enabled unless otherwise noted.

COLOR SELECT (CCT) ADJUSTMENT

Certain fixture models are equipped with Color Select technology. There is an adjustable dip switch behind the translucent knock-out (KO) cover to change CCT between 5000K, 4000K, and 3000K (see illustrations to the right). Fixture comes preset at 5000K unless otherwise noted.





KT-WPLED20-S1-8CSB-VDIM /EM4

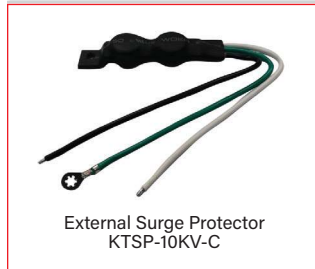
SMALL NON CUTOFF WALL PACK WITH BATTERY BACK UP

ACCESSORIES

SURGE PROTECTORS

Field-Installable / Field-Use ONLY (purchased separately)

CATALOG NUMBER	DESCRIPTION	UPC	EASY CODE
KTSP-10KV-C	External Surge Protector, compact design. Parallel Wiring, 120-277V Input, Max Peak Protection (10KV, 10KA)	843654129204	BUU-26



* For factory installation of accessory, add suffix to fixture part number (see ordering examples and instructions on last page of spec sheet).

ORDERING INFORMATION

CATALOG NUMBER	PACK QTY.	UPC	EASY CODE
KT-WPLED20-S1-8CSB-VDIM /EM4	1	843654157498	OMA-65

CATALOG NUMBER BREAKDOWN

KT-WPLED20-S1-8CSB-VDIM /EM4

1	2	3	4	5	6	7	8	9	10	11
1 Keystone Technologies	2 Fixture Type	3 LED Lamp	4 Wattage	5 Size	6 Style	7 80 CRI	8 Color Select	9 Color Select Designation	10 0-10V Dimming	11 Emergency Battery Backup
	WP Wall Pack			S Small	1 Non-Cutoff			B 3000/4000/5000K	VDIM 0-10V	
				8 >80						