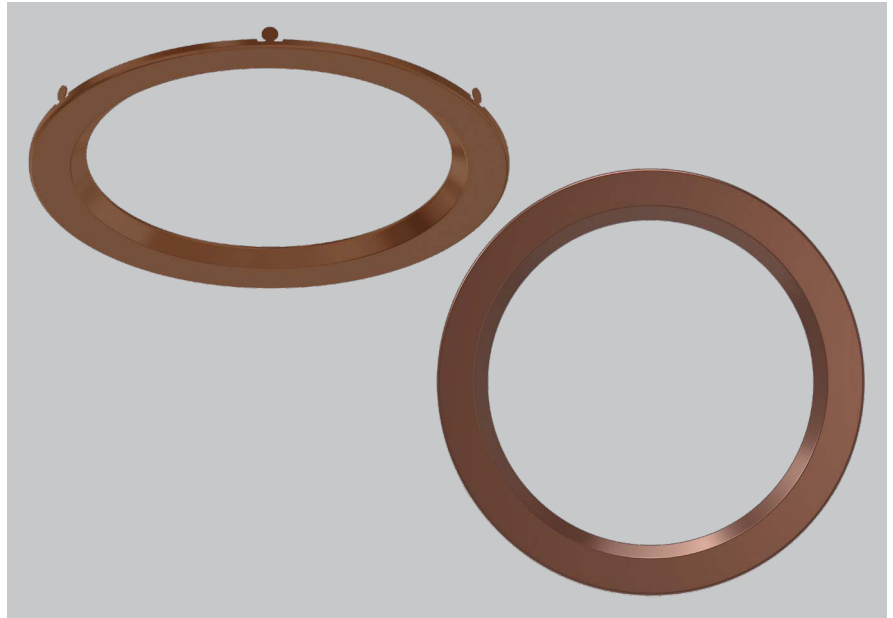


# KT-WDLED-XB-BR-TRIM

## INTERCHANGEABLE TRIM FOR WAFER DOWNLIGHTS

**DESCRIPTION**

Interchangeable Trim for Series B  
Wafer Downlights | Bronze



**PHYSICAL SPECIFICATIONS**

| Size | D1 (Diameter 1) | D2 (Diameter 2) | H1 (Height 1) | H2 (Height 2) |
|------|-----------------|-----------------|---------------|---------------|
| 4"   | 4.85"           | 3.02"           | 0.44"         | 0.30"         |
| 6"   | 6.91"           | 4.90"           | 0.44"         | 0.30"         |
| 8"   | 8.98"           | 6.82"           | 0.44"         | 0.30"         |



# KT-WDLED-XB-BR-TRIM

## INTERCHANGEABLE TRIM FOR WAFER DOWNLIGHTS

### ORDERING INFORMATION

| Catalog Number      | Pack Qty. | UPC          | Easy Code |
|---------------------|-----------|--------------|-----------|
| KT-WDLED-4B-BR-TRIM | 1         | 843654139470 | XXG-12    |
| KT-WDLED-6B-BR-TRIM | 1         | 843654139487 | HEB-17    |
| KT-WDLED-8B-BR-TRIM | 1         | 843654139494 | GXE-62    |

### CATALOG NUMBER BREAKDOWN

# KT-WDLED-XB-BR-TRIM

1
2
3
4
5
6
7

- 1** Keystone Technologies
- 2** Wafer Downlight
- 3** LED Technology
- 4** Nominal Size
- 5** Series B
- 6** Bronze
- 7** Trim

#### 4 Nominal Size

|   |    |
|---|----|
| 4 | 4" |
| 6 | 6" |
| 8 | 8" |