

**JUNO®****TRAC-MASTER®**

Avant Garde

**CYLINDRA™ 11W LED****T252L**

Project: \_\_\_\_\_

Fixture Type: \_\_\_\_\_

Location: \_\_\_\_\_

Contact/Phone: \_\_\_\_\_



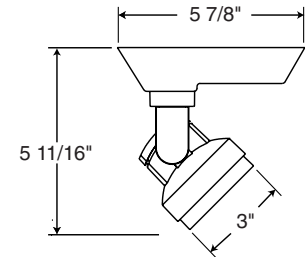
Buy American

**PRODUCT DESCRIPTION**

The Cylindra™ 11W LED approximates the light output and distribution of 75W MR16 halogen lamps, utilizing less than 1/4 of the energy and having a rated life of 50,000 hours. It is available in 2700K, 3000K, 3500K and 4000K color temperatures with a minimum 80 CRI on standard product. Optional high CRI versions and SpectralWhite versions are also available. The white-light Cylindra LED is compatible with all Juno line voltage trac and T58 monopoints. The contemporary styling of the Cylindra LED enables it to subtly enhance practically any decor without diverting attention from the surrounding environment. Soft curved surfaces combine with clean, crisp edges to provide a uniquely attractive aesthetic. Cylindra's integral, bayonet-mounted accessory holder accommodates one accessory if desired.

**DIMENSIONS**

Fixture supplied complete  
as shown in photo

**Cylindra 11W LE**

**Construction** Die cast aluminum housing provides outstanding thermal management of LED, yielding 70% average lumen maintenance at 50,000 hours of operation • Fashionable, elegant design complements any decor • Available in white, black and silver painted finishes.

**LED** High performance LED array provides outstanding reliability, performance and color quality/consistency • 2700K, 3000K, 3500K or 4000K white phosphor high performance LEDs • Chromaticity range within a 3-step MacAdam Ellipse • 80 CRI minimum on standard product • Optional high CRI versions offer 90 CRI minimum with a R9 value greater than 50 • Optional SpectralWhite versions are available which make whites appear naturally brilliant and render colors more richly.

**Driver** Factory assembled to lampholder and supplied complete with fixture – nothing to order separately • Solid state electronic, Class 2 compliant • Dimmable using high quality forward phase and reverse phase dimmers • Designed for greater than 50,000 hour operating life • FCC Certified to Part 15 Class B EMI standards • Provides quiet operation with or without dimming • Compatible with Trac-Master or Trac-Lites Series trac or T58 monopoint or TWLED Extension Wands • Constructed in a contemporary styled, high impact polycarbonate housing (included) • Integral on/off switch.

**Optics** Interchangeable computer-designed custom TIR optics available in four factory-configured beam spreads • One TIR optic provided with fixture (as specified in catalog number) • Accessory optics available to enable beam changes in the field • Beam patterns can be altered as desired using a variety of available light control accessories.

**Juno Universal Trac Adapter** Universally compatible with both Trac-Master 1-circuit or 2-circuit trac, Trac-Lites trac and monopoints • Also UL Recognized for use on ConTech® LT Series track • Copper alloy contacts provide precise spring action - no arcing and will not take a set • True, positive electrical ground • On/off switch included • Spring-loaded positive latch with embossed polarity arrows secures trac light to trac • Two-position power contact provided for two-circuit application.

**Alternate GTYPE Trac Adapter** Compatible with track systems based on GES type track, including Lithonia LT Commercial Track (not LTS type) • System specific and assembled to trac fixture • Consult factory for additional information.

**Alternate HTYPE Trac Adapter** Compatible with track systems which use a H-type track adapter, including Lithonia LTS Decorative Track (not LT type) • System specific and assembled to trac fixture • Two-position power contact provided for two-circuit application • Consult factory for additional information.

**Alternate LTYPE Trac Adapter** Compatible with track systems which use a L-type track adapter • System specific and assembled to trac fixture • Two-position power contact provided for two-circuit application • Consult factory for additional information.

**Accessory Holder** Integral to fixture design • Die cast aluminum construction • Precision bayonet mounting • Accommodates one accessory if desired.

**Aiming** 360° horizontal coverage • 105° vertical aiming capability.

**Buy American** This product is assembled in the USA and meets the Buy America(n) government procurement requirements under FARS, DFARS and DOT. Please refer to [www.acuitybrands.com/buy-american](http://www.acuitybrands.com/buy-american) for additional information.

**Warranty** 5-year limited warranty. Complete warranty terms located at: [www.acuitybrands.com/CustomerResources/Terms\\_and\\_conditions.aspx](http://www.acuitybrands.com/CustomerResources/Terms_and_conditions.aspx).

**Labels** UL and C-UL Listed • ENERGY STAR® certified • DesignLights Consortium® Qualified • Union made • Assembled in U.S.A.

Specifications subject to change without notice.

ConTech is a registered trademark of ConTech Lighting.



One Lithonia Way • Conyers, GA 30012 • Phone 1-800-705-SERV (7378) • Visit us at [www.acuitybrands.com](http://www.acuitybrands.com)  
Printed in U.S.A. ©2017-2021 Acuity Brands Lighting, Inc. Rev. 03/23/21

# TRAC-MASTER®

Avant Garde

## CYLINDRA™ 11W LED

### T252L

#### ORDERING INFORMATION

Ordering Example: T252L G2 27K 90CRI PDIM SP WH

Series	Mounting Adapter Type	Generation	Color Temperature	Color Rendering Index	Dimming Compatibility
<b>T252L</b> 11W Cylindra LED	<b>(Blank)</b> Universal 120V Trac Adapter <b>GTYPE</b> G-Type Trac Adapter <b>HTYPE</b> H-Type Trac Adapter <b>LTYPE</b> L-Type Trac Adapter	<b>G2</b> Generation 2	<b>27K</b> 2700K <b>30K</b> 3000K <b>35K</b> 3500K <b>40K</b> 4000K	<b>80CRI</b> 80 CRI <b>90CRI</b> 90 CRI <b>SPW</b> SpectralWhite (3000K & 3500K only)	<b>PDIM</b> Phase Dimmable

Distribution	Finish
<b>SP</b> Spot <b>NFL</b> Narrow Flood <b>FL</b> Flood <b>WFL</b> Wide Flood	<b>BL</b> Black <b>SL</b> Silver <b>WH</b> White

Accessories					
<b>HCLBL 200</b>	Hexagonal Cell Louver - Black	<b>DIFF 200</b>	Diffusion Glass Lens	<b>TIR5 WFLD</b>	TIR Optic - Wide Flood
<b>SNOOTBL 200</b>	Snoot - Black	<b>SOLITE 200</b>	Uniformity Lens (Solite)	<b>TWLED 12IN<sup>2</sup></b>	Extension Wand - 12"
<b>EYEBROWBL 200</b>	Eyebrow - Black	<b>PRISM 200</b>	Prismatic Spread Lens	<b>TWLED 18IN<sup>2</sup></b>	Extension Wand - 18"
<b>T74BL 175</b>	Barn Doors - Black	<b>LSPREAD 200</b>	Linear Spread Lens	<b>TWLED 24IN<sup>2</sup></b>	Extension Wand - 24"
<b>CGF 200</b>	Color Glass Filters	<b>T58<sup>2</sup></b>	Mounopoint Canopy	<b>TWLED 36IN<sup>2</sup></b>	Extension Wand - 36"
<b>DGF 200</b>	Dichroic Glass Filter	<b>TIR1 SPT</b>	TIR Optic - Spot	<b>TWLED 48IN<sup>2</sup></b>	Extension Wand - 48"
<b>DCCF 200<sup>1</sup></b>	Dichroic Color Correction Filter	<b>TIR1 NFLD</b>	TIR Optic - Narrow Flood		
<b>UVF 200</b>	UV Filter	<b>TIR1 FLD</b>	TIR Optic - Flood		

See specification sheet [D1.2.2](#) for details and color filter options.Other accessories can be found on specification sheet [D1.2.0](#).

## Notes:

- DCCF 200 HAL2700 corrects 3000K color to approximately 2700K and 4000K color to approximately 3400K.
- Add finish code to complete catalog number (Example: TWLED 12IN WH).

# TRAC-MASTER®

Avant Garde

## CYLINDRA™ 11W LED

### T252L

#### PHOTOMETRICS

##### PERFORMANCE DATA<sup>1</sup>

Catalog Number	Input Voltage	Watts (Typical)	Lumens	Efficacy (LPW)	Rated Life (Hours)
T252L 27K 80CRI SP	120V	11.5W	968	84	50,000
T252L 27K 80CRI NFL	120V	11.5W	962	84	50,000
T252L 27K 80CRI FL	120V	11.5W	974	85	50,000
T252L 27K 80CRI WFL	120V	11.5W	892	78	50,000
T252L 27K 90CRI SP	120V	11.5W	786	68	50,000
T252L 27K 90CRI NFL	120V	11.5W	782	68	50,000
T252L 27K 90CRI FL	120V	11.5W	792	69	50,000
T252L 27K 90CRI WFL	120V	11.5W	725	63	50,000
T252L 30K 80CRI SP	120V	11.5W	1008	88	50,000
T252L 30K 80CRI NFL	120V	11.5W	1002	87	50,000
T252L 30K 80CRI FL	120V	11.5W	1015	88	50,000
T252L 30K 80CRI WFL	120V	11.5W	929	81	50,000
T252L 30K 90CRI SP	120V	11.5W	816	71	50,000
T252L 30K 90CRI NFL	120V	11.5W	812	71	50,000
T252L 30K 90CRI FL	120V	11.5W	822	71	50,000
T252L 30K 90CRI WFL	120V	11.5W	752	65	50,000
T252L 30K SPW SP	120V	11.5W	887	77	50,000
T252L 30K SPW NFL	120V	11.5W	882	77	50,000
T252L 30K SPW FL	120V	11.5W	893	78	50,000
T252L 30K SPW WFL	120V	11.5W	818	71	50,000
T252L 35K 80CRI SP	120V	11.5W	1038	90	50,000
T252L 35K 80CRI NFL	120V	11.5W	1032	90	50,000
T252L 35K 80CRI FL	120V	11.5W	1045	91	50,000
T252L 35K 80CRI WFL	120V	11.5W	957	83	50,000
T252L 35K 90CRI SP	120V	11.5W	857	75	50,000
T252L 35K 90CRI NFL	120V	11.5W	852	74	50,000
T252L 35K 90CRI FL	120V	11.5W	863	75	50,000
T252L 35K 90CRI WFL	120V	11.5W	790	69	50,000
T252L 35K SPW SP	120V	11.5W	907	79	50,000
T252L 35K SPW NFL	120V	11.5W	902	78	50,000
T252L 35K SPW FL	120V	11.5W	914	79	50,000
T252L 35K SPW WFL	120V	11.5W	836	73	50,000
T252L 40K 80CRI SP	120V	11.5W	1058	92	50,000
T252L 40K 80CRI NFL	120V	11.5W	1052	91	50,000
T252L 40K 80CRI FL	120V	11.5W	1066	93	50,000
T252L 40K 80CRI WFL	120V	11.5W	975	85	50,000
T252L 40K 90CRI SP	120V	11.5W	867	75	50,000
T252L 40K 90CRI NFL	120V	11.5W	862	75	50,000
T252L 40K 90CRI FL	120V	11.5W	873	76	50,000
T252L 40K 90CRI WFL	120V	11.5W	799	69	50,000

##### ELECTRICAL DATA

Input Voltage	120V
Input Current (max.)	0.16A
Power Factor	>0.92
T.H.D.	<20%

<sup>1</sup>Performance data, including Rated Life, is based on measurements of an individual fixture operating in a 25 °C ambient.

# TRAC-MASTER®

## Avant Garde

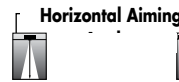
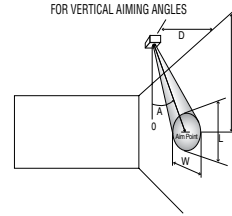
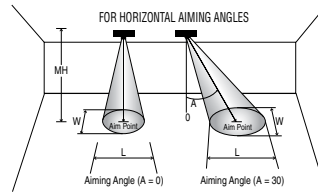
### CYLINDRA™ 11W LED

### T252L

#### PHOTOMETRICS

**CBCP** • Centerbeam candlepower  
**FC** • Footcandles at beam center (aim point)

In vertical aiming applications, aim point (X) is determined by dividing distance from the wall (D) by the tangent of the desired aim angle (A) (0.5774 for 30°, 1.0 for 45°, 1.732 for 60°).



Lamp	Beam Type	Beam Spread	Rated Life	CBCP	0°				30°			30°				45°				60°					
					MH	FC	L	W	FC	L	W	D	FC	X	L	W	FC	X	L	W	D	FC	X	L	W
Cylindra 11W LED, 3000K, 80CRI Spot	S	16°	50000	10168	6	282	1.6	1.6	183	2.2	1.9	3	141	5.2	3.5	1.6	399	3.0	1.7	1.2	6	183	3.5	2.2	1.9
					8	159	2.2	2.2	103	2.9	2.5	4	79	6.9	4.6	2.2	225	4.0	2.2	1.5	8	103	4.6	2.9	2.5
					10	102	2.7	2.7	66	3.7	3.1	5	51	8.7	5.8	2.7	144	5.0	2.8	1.9	10	66	5.8	3.7	3.1
					12	71	3.3	3.3	46	4.4	3.8	6	35	10.4	6.9	3.3	100	6.0	3.3	2.3	12	46	6.9	4.4	3.8
					14	52	3.8	3.8	34	5.1	4.4	7	26	12.1	8.1	3.8	73	7.0	3.9	2.7	14	34	8.1	5.1	4.4
Cylindra 11W LED, 3000K, 80CRI Narrow Flood	N	26°	50000	4229	4	264	1.9	1.9	172	2.5	2.1	2	132	3.5	4.4	1.9	374	2.0	2.0	1.3	4	172	2.3	2.5	2.1
					6	117	2.8	2.8	76	3.8	3.2	3	59	5.2	6.6	2.8	166	3.0	2.9	2.0	6	76	3.5	3.8	3.2
					8	66	3.7	3.7	43	5.0	4.3	4	33	6.9	8.8	3.7	93	4.0	3.9	2.6	8	43	4.6	5.0	4.3
					10	42	4.6	4.6	27	6.3	5.4	5	21	8.7	11.1	4.6	60	5.0	4.9	3.3	10	27	5.8	6.3	5.4
					12	29	5.6	5.6	19	7.6	6.4	6	15	10.4	13.3	5.6	42	6.0	5.9	3.9	12	19	6.9	7.6	6.4
Cylindra 11W LED, 3000K, 80CRI Flood	F	37°	50000	2329	4	146	2.7	2.7	95	3.7	3.1	1	291	1.7	4.1	1.4	823	1.0	1.5	1.0	3	168	1.7	2.8	2.3
					5	93	3.4	3.4	61	4.7	3.9	2	73	3.5	8.2	2.7	206	2.0	3.0	1.9	4	95	2.3	3.7	3.1
					6	65	4.1	4.1	42	5.6	4.7	3	32	5.2	12.3	4.1	91	3.0	4.6	2.9	5	61	2.9	4.7	3.9
					7	48	4.7	4.7	31	6.5	5.5	4	18	6.9	16.4	5.4	51	4.0	6.1	3.8	6	42	3.5	5.6	4.7
					8	36	5.4	5.4	24	7.5	6.2	5	12	8.7	20.5	6.8	33	5.0	7.6	4.8	7	31	4.0	6.5	5.5
Cylindra 11W LED, 3000K, 80CRI Wide Flood	W	53°	50000	1020	3	113	3.0	3.0	74	4.4	3.5	1.0	128	1.7	16.2	2.0	361	1.0	2.7	1.4	3	74	1.7	4.4	3.5
					4	64	4.0	4.0	41	5.8	4.6	1.5	57	2.6	24.3	3.0	160	1.5	4.0	2.1	4	41	2.3	5.8	4.6
					5	41	5.0	5.0	27	7.3	5.8	2.0	32	3.5	**	4.0	90	2.0	5.3	2.8	5	27	2.9	7.3	5.8
					6	28	6.0	6.0	18	8.7	6.9	2.5	20	4.3	**	5.0	58	2.5	6.7	3.5	6	18	3.5	8.7	6.9
					7	21	7.0	7.0	14	10.2	8.1	3.0	14	5.2	**	6.0	40	3.0	8.0	4.2	7	14	4.0	10.2	8.1

For 2700K 80CRI fixtures, use 0.96 multiplier; for 2700K 90CRI fixtures, use 0.78 multiplier; for 3000K 90CRI fixtures, use 0.81 multiplier; for 3000K SPW fixtures, use 0.88 multiplier; for 3500K 80CRI fixtures, use 1.03 multiplier; for 3500K 90CRI fixtures, use 0.85 multiplier; for 3500K SPW fixtures, use 0.90 multiplier; for 4000K 80CRI fixtures, use 1.05 multiplier; for 4000K 90CRI fixtures, use 0.86 multiplier.

\*\*Due to steep aiming angle, length of beam extends beyond 25'.