



TRAC-LITES™

15W ADJUSTABLE BEAM LED CYLINDER

R620L SERIES

Project: _____

Fixture Type: _____

Location: _____

Contact/Phone: _____



PRODUCT DESCRIPTION

The R620L Series 15W Adjustable Beam LED Cylinder is an economical and affordable trac fixture, with a simple and timeless cylindrical aesthetic. It features a proprietary optical system that enables the beam distribution to be adjusted continuously between 17-degrees and 53-degrees simply by rotating the front bezel, without the use of tools or requiring any additional accessories. This makes the R620L perfect for applications that require a range of beam patterns or where the desired beam pattern is unknown at the time of specification/purchase. It is available in 2700K, 3000K, 3500K and 4000K color temperatures with a minimum 80 CRI. Optional high CRI versions are available with a minimum 90 CRI. The R620L Series LED is available with an optional, bayonet-mount accessory holder that accommodates one accessory if desired. It is compatible with Juno Trac-Lites™ and Trac-Master® Trac and system components, or it can be specified with a variety of factory-assembled alternate mounting adapters to fit on practically any competitive 120V track system.



PRODUCT SPECIFICATIONS

Construction Die cast aluminum housing provides outstanding thermal management of LED, yielding 70% average lumen maintenance at 50,000 hours of operation • Simple, timeless design complements any decor • Available in white, black and silver finishes.

LED High performance LED array provides outstanding reliability, performance and color quality/consistency • 2700K, 3000K, 3500K or 4000K white phosphor high performance LEDs • Chromaticity range within a 3-step MacAdam Ellipse • Exceptional 80 CRI minimum on standard product • Optional high CRI versions offer 90 CRI minimum, with an R9 value greater than 50.

Driver Integrated into fixture housing behind LED light engine to minimize overall fixture footprint • Insulating air gap between driver and LED light engine, plus thermal potting compound, optimizes thermal operation • Provides quiet operation with or without dimming • Dimmable using high quality, factory-approved dimmers - see [R620L-DIM](#) • Solid state electronic, Class 2 compliant • Integral overcurrent and short circuit protection • Designed for greater than 50,000 hour operating life • FCC Certified to Part 15 Class B EMI standards.

Optics Patented, computer-designed custom multi-component optical system delivers continuous beam adjustment from as low as 17-degrees up to 53-degrees • Adjustment is accomplished by simply rotating the front bezel, without the use of tools or add-on accessories • Variable Beam System offers unparalleled efficacy throughout the beam adjustment range, maintaining lumen output within a narrow 40 lumen or less performance band • Beam patterns can be further altered as desired using a variety of available light control accessories.

Accessory Holder Optional accessory ring attaches directly to front bezel without tools • May be specified as a factory-installed option or ordered separately as a field-installed accessory • Precision bayonet mounting • Accommodates one accessory if desired.

Juno Universal Trac Adapter Universally compatible with both Trac-Master 1-circuit or 2-circuit trac, Trac-Lites trac, monopoints and special mountings • Also UL Recognized for use on ConTech® LT Series track • Copper alloy contacts provide precise spring action – no arcing and will not take a set • True, positive electrical ground • On /off switch included • Patented embossed polarity arrows on bottom of adapter • Spring-loaded positive latch with embossed polarity arrows secures trac light to trac • Two-position power contact provided for two-circuit application.

Alternate TEK Trac Adapter Compatible with Juno TEK trac system • System specific and assembled to trac fixture • Integrally polarized construction to prevent reverse installation – only allows insertion in proper orientation • Rotary circuit selector enables simple switching between circuits • Integral on/off switch enables individual fixtures to be switched for servicing.

Alternate GTYPE Trac Adapter Compatible with track systems based on GES type track, including Lithonia LT Commercial Track (not LTS type) • System specific and assembled to trac fixture • Available in black, silver, and white finish only • Consult factory for additional information.

Alternate HTYPE Trac Adapter Compatible with track systems which use a H-type track adapter, including Lithonia LTS Decorative Track (not LT type) • System specific and assembled to trac fixture • Two-position power contact provided for two-circuit application • Available in black, silver, and white finish only • Consult factory for additional information.

Alternate LTYPE Trac Adapter Compatible with track systems which use a L-type track adapter • System specific and assembled to trac fixture • Two-position power contact provided for two-circuit application • Available in black, silver, and white finish only • Consult factory for additional information.

Aiming 360° horizontal coverage • 95° vertical aiming capability.

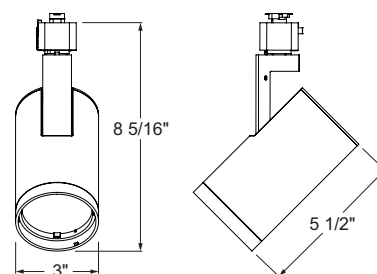
Labels UL and C-UL Listed • ENERGY STAR® certified • 80 CRI versions are DLC Qualified • 90 CRI versions certified as CEC Title 24 Compliant • Union made • Assembled in U.S.A.

Buy American This product is assembled in the USA and meets the Buy America(n) government procurement requirements under FARS, DFARS and DOT. Please refer to www.acuitybrands.com/buy-american for additional information.

Warranty 5-year limited warranty. This is the only warranty provided and no other statements in this specification sheet create any warranty of any kind. All other express and implied warranties are disclaimed. Complete warranty terms located at: www.acuitybrands.com/support/warranty/terms-and-conditions.

Specifications subject to change without notice.

DIMENSIONS



ConTech is a registered trademark of ConTech Lighting.



One Lithonia Way • Conyers, GA 30012 • Phone 1-800-705-SERV (7378) • Visit us at www.acuitybrands.com
Printed in U.S.A. ©2019, 2022 Acuity Brands Lighting, Inc. Rev. 03/28/22

TRAC-LITES™

15W ADJUSTABLE BEAM LED CYLINDER

R620L SERIES

ORDERING INFORMATION

Ordering Example: R620L 27K 80CRI PDIM VBS BL, R620L HTYPE 30K 90CRI PDIM VBS WH AHR620 WHT

Series	Mounting Adapter Type	Color Temperature	Color Rendering Index	Dimming Compatibility	Distribution
R620L Trac-Lites™ 15W Adjustable Beam LED Cylinder	(Blank) Juno Universal 120V Trac Adapter	27K 2700K	80CRI 80 CRI	PDIM Phase Dimmable	VBS Variable Beam System
	GTYPE G-Type Trac Adapter	30K 3000K	90CRI 90 CRI		
	HTYPE H-Type Trac Adapter	35K 3500K			
	LTYPE L-Type Trac Adapter	40K 4000K			
	TEK ¹ TEK 120V Trac Adapter				

Finish	Accessory Holder Option
BL Black	AHR620 BLCK Accessory Holder for R620L, Black
SL Silver	AHR620 WHT Accessory Holder for R620L, White
WH White	

Accessories			
AHR620 BLCK 275	Accessory Holder for R620L, Black	DIFF 275	Diffusion Glass Lens
AHR620 WHT 275	Accessory Holder for R620L, White	UVF 275	UV Filter
HCLBL 275	Hexagonal Cell Louver - Black	LSPREAD 275	Linear Spread Glass Lens
CGF 275	Color Glass Filters	PRISM 275	Prismatic Spread Glass Lens
DGF 275	Dichroic Glass Filters	SOLITE 275	Uniformity Lens (Solite)
DCCF 275	Dichroic Color Correction Filters		

See specification sheet [D1.2.2](#) for details and color filter options.

Notes:

1 TEK adapter is black on silver finish fixtures.

TRAC-LITES™

15W ADJUSTABLE BEAM LED CYLINDER

R620L SERIES

PERFORMANCE DATA¹

Catalog Number	Input Voltage	Watts (Typical)	Lumens	Efficacy (LPW)	Rated Life (Hours)
R620L 27K 80CRI (Spot)	120V	15.3	1128	74	50,000
R620L 27K 80CRI (Narrow Flood)	120V	15.3	1107	72	50,000
R620L 27K 80CRI (Flood)	120V	15.3	1099	72	50,000
R620L 27K 80CRI (Wide Flood)	120V	15.3	1089	71	50,000
R620L 27K 90CRI (Spot)	120V	15.3	928	61	50,000
R620L 27K 90CRI (Narrow Flood)	120V	15.3	911	60	50,000
R620L 27K 90CRI (Flood)	120V	15.3	905	59	50,000
R620L 27K 90CRI (Wide Flood)	120V	15.3	896	59	50,000
R620L 30K 80CRI (Spot)	120V	15.3	1175	77	50,000
R620L 30K 80CRI (Narrow Flood)	120V	15.3	1153	75	50,000
R620L 30K 80CRI (Flood)	120V	15.3	1145	75	50,000
R620L 30K 80CRI (Wide Flood)	120V	15.3	1134	74	50,000
R620L 30K 90CRI (Spot)	120V	15.3	987	65	50,000
R620L 30K 90CRI (Narrow Flood)	120V	15.3	969	63	50,000
R620L 30K 90CRI (Flood)	120V	15.3	962	63	50,000
R620L 30K 90CRI (Wide Flood)	120V	15.3	953	62	50,000
R620L 35K 80CRI (Spot)	120V	15.3	1199	78	50,000
R620L 35K 80CRI (Narrow Flood)	120V	15.3	1176	77	50,000
R620L 35K 80CRI (Flood)	120V	15.3	1168	76	50,000
R620L 35K 80CRI (Wide Flood)	120V	15.3	1157	76	50,000
R620L 35K 90CRI (Spot)	120V	15.3	1022	67	50,000
R620L 35K 90CRI (Narrow Flood)	120V	15.3	1003	66	50,000
R620L 35K 90CRI (Flood)	120V	15.3	996	65	50,000
R620L 35K 90CRI (Wide Flood)	120V	15.3	987	64	50,000
R620L 40K 80CRI (Spot)	120V	15.3	1234	81	50,000
R620L 40K 80CRI (Narrow Flood)	120V	15.3	1211	79	50,000
R620L 40K 80CRI (Flood)	120V	15.3	1202	79	50,000
R620L 40K 80CRI (Wide Flood)	120V	15.3	1191	78	50,000
R620L 40K 90CRI (Spot)	120V	15.3	1034	68	50,000
R620L 40K 90CRI (Narrow Flood)	120V	15.3	1015	66	50,000
R620L 40K 90CRI (Flood)	120V	15.3	1008	66	50,000
R620L 40K 90CRI (Wide Flood)	120V	15.3	998	65	50,000

¹Performance data, including Rated Life, is based on measurements of an individual fixture operating in a 25°C ambient. Additionally, due to the variable nature of the R620L optical system, beamspread types (shown above in parentheses) are nominally chosen to represent typical designations found in dedicated beam designs - actual results, though comparable, may vary in the field.

ELECTRICAL DATA

Input Voltage	120V
Input Current (max.)	0.13A
Power Factor	>0.95
T.H.D.	<20%

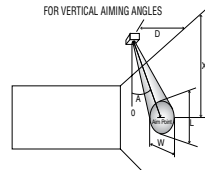
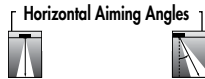
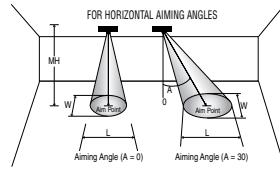
TRAC-LITES™

15W ADJUSTABLE BEAM LED CYLINDER

R620L SERIES

CBCP • Centerbeam candlepower
FC • Footcandles at beam center (aim point)

In vertical aiming applications, aim point (X) is determined by dividing distance from the wall (D) by the tangent of the desired aim angle (A) (0.5774 for 30°, 1.0 for 45°, 1.732 for 60°).



Fixture	Beam Type	Beam Spread	Rated Life	CBCP	0°			30°			30°			45°			60°								
					MH	FC	L	W	FC	L	W	D	FC	X	L	W	FC	X	L	W	D	FC	X	L	W
R620L 15W LED, 3000K, 80CRI Spot	SP	17°	50000	7241	6	201	1.8	1.8	131	2.4	2.1	3	101	5.2	3.8	1.8	284	3.0	1.8	1.3	6	131	3.5	2.4	2.1
					8	113	2.4	2.4	73	3.2	2.7	4	57	6.9	5.1	2.4	160	4.0	2.4	1.7	8	73	4.6	3.2	2.7
					10	72	3.0	3.0	47	4.0	3.4	5	36	8.7	6.4	3.0	102	5.0	3.0	2.1	10	47	5.8	4.0	3.4
					12	50	3.6	3.6	33	4.8	4.1	6	25	10.4	7.6	3.6	71	6.0	3.6	2.5	12	33	6.9	4.8	4.1
					14	37	4.2	4.2	24	5.6	4.8	7	18	12.1	8.9	4.2	52	7.0	4.3	2.9	14	24	8.1	5.6	4.8
R620L 15W LED, 3000K, 80CRI Narrow Flood	NFL	25°	50000	3050	4	191	1.8	1.8	124	2.4	2.1	2	95	3.5	4.2	1.8	270	2.0	1.9	1.3	4	124	2.3	2.4	2.1
					6	85	2.7	2.7	55	3.6	3.1	3	42	5.2	6.3	2.7	120	3.0	2.8	1.9	6	55	3.5	3.6	3.1
					8	48	3.6	3.6	31	4.8	4.1	4	24	6.9	8.4	3.6	67	4.0	3.8	2.5	8	31	4.6	4.8	4.1
					10	31	4.5	4.5	20	6.1	5.2	5	15	8.7	10.5	4.5	43	5.0	4.7	3.2	10	20	5.8	6.1	5.2
					12	21	5.4	5.4	14	7.3	6.2	6	11	10.4	12.6	5.4	30	6.0	5.6	3.8	12	14	6.9	7.3	6.2
R620L 15W LED, 3000K, 80CRI Flood	FL	35°	50000	1995	4	125	2.5	2.5	81	3.5	2.9	1	249	1.7	3.6	1.3	705	1.0	1.4	0.9	3	144	1.7	2.6	2.2
					5	80	3.2	3.2	52	4.3	3.6	2	62	3.5	7.2	2.5	176	2.0	2.8	1.8	4	81	2.3	3.5	2.9
					6	55	3.8	3.8	36	5.2	4.4	3	28	5.2	10.8	3.8	78	3.0	4.2	2.7	5	52	2.9	4.3	3.6
					7	41	4.4	4.4	26	6.1	5.1	4	16	6.9	14.4	5.0	44	4.0	5.6	3.6	6	36	3.5	5.2	4.4
					8	31	5.0	5.0	20	7.0	5.8	5	10	8.7	18.0	6.3	28	5.0	7.0	4.5	7	26	4.0	6.1	5.1
R620L 15W LED, 3000K, 80CRI Wide Flood	WFL	53°	50000	1196	2	299	2.0	2.0	194	2.9	2.3	1.0	150	1.7	16.7	2.0	423	1.0	2.7	1.4	2	194	1.2	2.9	2.3
					3	133	3.0	3.0	86	4.4	3.5	1.5	66	2.6	25.0	3.0	188	1.5	4.0	2.1	3	86	1.7	4.4	3.5
					4	75	4.0	4.0	49	5.9	4.6	2.0	37	3.5	33.4	4.0	106	2.0	5.4	2.8	4	49	2.3	5.9	4.6
					5	48	5.0	5.0	31	7.3	5.8	2.5	24	4.3	41.7	5.0	68	2.5	6.7	3.6	5	31	2.9	7.3	5.8
					6	33	6.0	6.0	22	8.8	7.0	3.0	17	5.2	50.1	6.0	47	3.0	8.1	4.3	6	22	3.5	8.8	7.0

For 27K 80CRI fixtures, use 0.96 multiplier; for 27K 90CRI fixtures, use 0.79 multiplier; for 30K 90CRI fixtures, use 0.84 multiplier; for 35K 80CRI fixtures, use 1.02 multiplier; for 35K 90CRI fixtures, use 0.87 multiplier; for 40K 80CRI fixtures, use 1.05 multiplier; for 40K 90CRI fixtures, use 0.88 multiplier. Also note that, due to the variable nature of the R620L optical system, beamspread types (shown above in table) are nominally chosen to represent typical designations found in dedicated beam designs - actual results, though comparable, may vary in the field.