



Mini Wall Pack: M-Line - w/ Photocell 3-CCT



Detail Specifications:

- Finish: Bronze, Custom finishes available
- IP Rating: Wet Location
- Impact Rating: IK08
- Beam Angle: 100°
- BUG: B1-U3-G2
- Chip: SMD 2835, R9 >50, CRI >80
- Operating Temperature: -40° - 122° F
- Lens: Clear acrylic with optics
- Average life (L70) of 70,000 hours

Applications:

- Walkways & Pathways
- Parking Lots
- Hospitality, Multi-Family
- Outdoor Corridors
- Residential, Commercial and Industrial

Product Information:

- Sturdy die-cast aluminum housing finished with corrosion free powder coat
- Traditional metal-halide wall pack size
- Instant-On to full brightness

Driver Options:

- UNV: 120-277V 0-10V Dimmable
- Built in 6Kv Surge Protector
- THD: <20% (+/-5% tolerance), PF >0.9, 50/60Hz

Mounting & Installation:

- Three 1/2" knockouts: 1 one each side for convenient installation

Certifications:

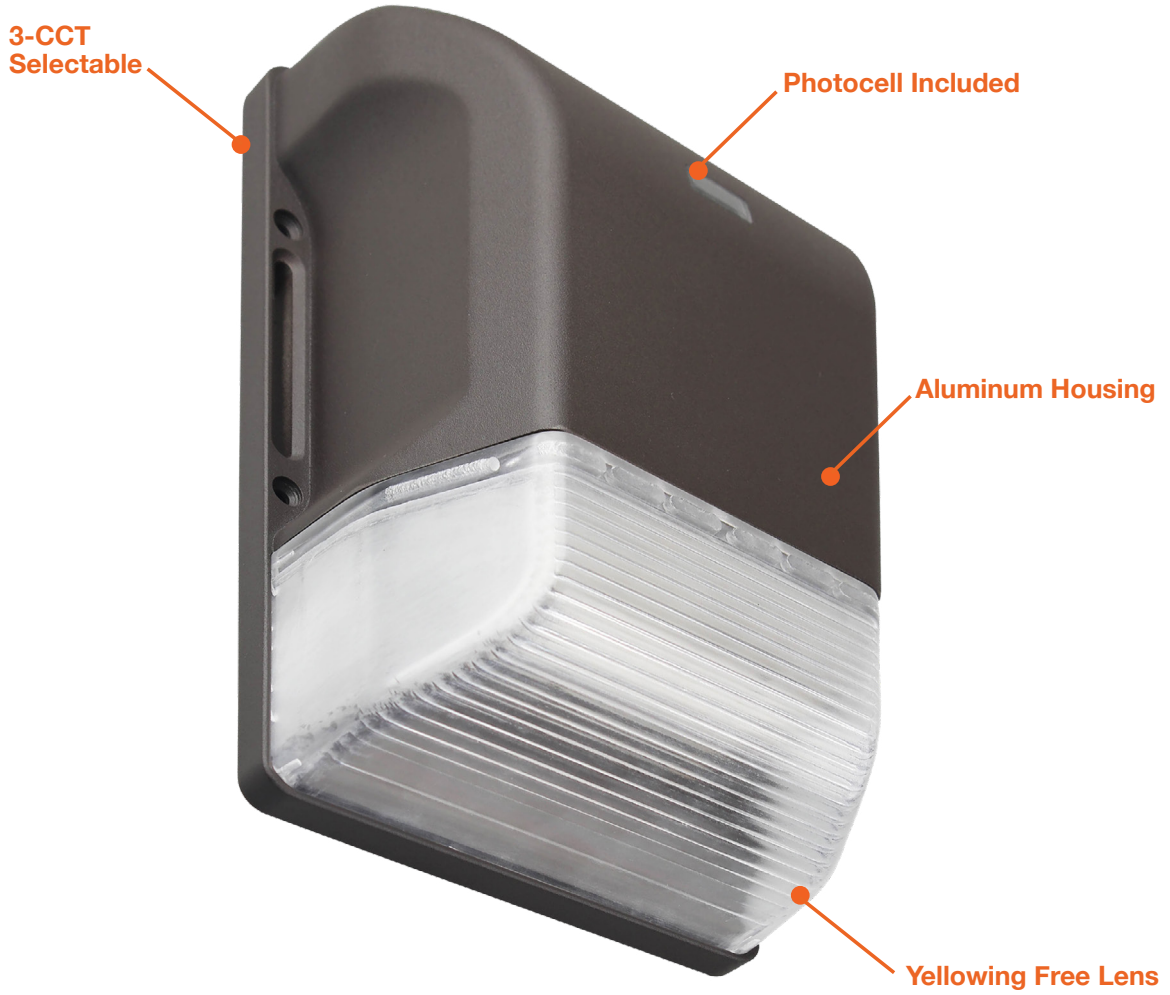
- UL Listed for USA and CA
- DLC Listed
- ROHS Compliant
- Approved for CA T24
- 5 Year Limited Warranty
- FCC CFR 47, GCC Part 15, Subpart B:2017

Series	Finish ¹	Photocell
LED-WPM-20W-TRI-F - 20W • 2,860 Lumens	BZ Bronze (Standard)	- PC - Photocell is included. Easy quick disconnect. (PC-3/4- 3PIN-LV)
	BL¹ Black	(Blank) No Sensor
	WH¹ White	BMS Bi-Level Motion + Daylight Sensor
	GRY¹ Gray	
	CS¹ Custom Color	

1. Standard quickship is bronze. Other colors are custom finishes

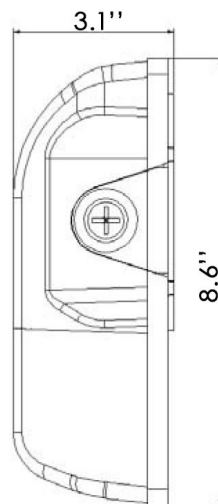
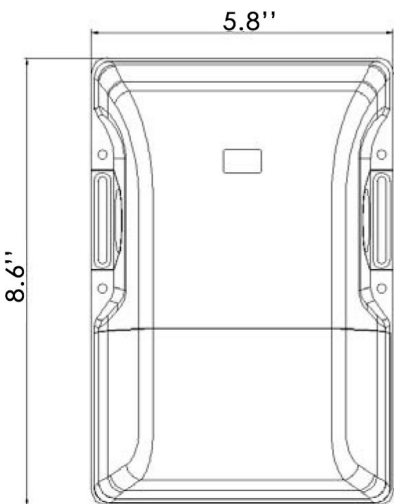
Specs and model numbers are subject to change with or without notice.

FEATURES



DIMENSIONS

Model	Voltage	Watts	Lumens	Color	CRI
LED-WPM-20W-TRI-F-BZ-PC	120-277V	20w	2,600	30/40/50k	>80



Specs and model numbers are subject to change with or without notice.