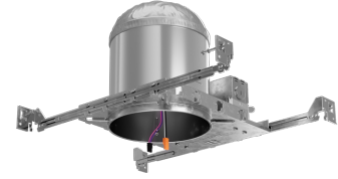


6" 0-10V IC New Construction Dedicated LED Housing



Features

- Wired for 0-10V Dimming
- Single Wall IC Airtight rated for direct contact with insulation
- 120/277V Input
- Meets restricted air flow requirements (per ASTM E-283)
- UL listed for direct contact with insulation
- UL listed for wet locations with wet location inserts
- UL listed for feed through
- CA Title 24 compliant

Specifications

Voltage	120/277V
Dimmable	0-10V/Triac/ELV

Options



Emergency Backup

Technical Details

Construction: Single wall IC rated for direct contact with insulation, for use in IC or non-IC conditions. Housing adjusts in frame to accommodate up to 1 1/4" ceiling thickness. Airtight housing with gasket to restrict airflow in accordance with ASTM E-283 air-tight requirements. Steel housing for greater heat dissipation. Stamped galvanized steel frame.

Installation: Designed for ceiling plenums where 2x6 joists or taller joists are used. High strength hanger bars can easily be nailed to joists. Maximum hole cutout is 6 1/4". Suitable for T-grid and drop ceiling applications. See installation sheet for detailed information.

Junction Box: Positioned to accommodate straight conduit runs. Seven 1/2" trade size conduit knockouts, four 3/4" knockouts. Pry-out knockout slots. 4 Romex pryouts with strain relief.

Hanger Bars: Pre-installed hanger bars with TrueNail facilitate easy installation in regular lumber, engineered lumber, and laminated beams. Integral T-bar slots for easy installation in T-bars. Spans up to 24" and can be repositioned 90°. Score lines allow for tool-free hanger bar size reduction. Integral leveling flange allows for single-person installation while aligning the housings with the joists.

Electrical: Input Voltage: 120/277V. Inherently protected. Fixture rated for 24W MAX. LED insert

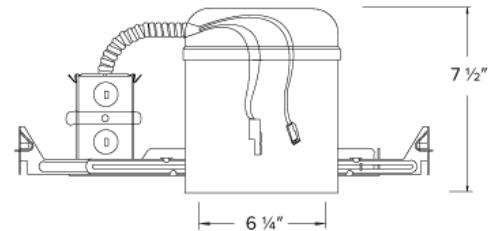
Trims: Compatible with ELCO 6" 0-10V LED Inserts and 0-10V Koto™ Module.

Dimmability: Dimmability based on insert used.

Listings: UL Listed for Damp Location. UL Listed for Wet Location with select trims. UL Listed for Feed Through. UL Listed for Direct Contact with Insulation and Combustible Material. Airtight per ASTM E-283. JA8-2016-E Title 24 Compliant.

Warranty: ELCO Lighting warrants products will be free from defects in materials and workmanship for a period of 5 years.

Dimensions



Product Numbers

Item	Description	Voltage	Dimming
EL770ICDXA		120/277V	0-10V/Triac/ELV
EL770ICDXAEM	Emergency Backup	120/277V	0-10V/Triac/ELV

Compatible Products



For use with Dedicated 6" IC LED Housings

6" Ply™ 0-10V Dimmable, 120/277V LED Inserts



Round Insert

EL695

Finishes:

(DW, DHW, DCW)

PRODUCT NUMBER BUILDER

6" 120/277V LED Inserts	Color Temperature	Finish
EL695		
	30 3000K (1350 lm) 35 3500K (1425 lm) 40 4000K (1500 lm)	DW All White DHW Haze w/White Ring DCW Chrome w/White Ring

6" Ply™ 0-10V Dimmable, 120/277V Adjustable LED Inserts



Round Adjustable Pull Down

EL697

Finishes:

(DXW, DXB, DXBZ, DXN)

ACCESSORIES



Interchangeable Lens
(For EL697 Series only)

EP710C 20° Beam
EP712C 60° Beam

PRODUCT NUMBER BUILDER

6" 120/277V Adjustable LED Inserts	Style	Color Temperature	Finish
EL6			
	97 Round Adjustable	27D 2700K (850 lm) 30D 3000K (900 lm)	DXW All White DXB All Black DXBZ All Bronze DXBN All Nickel