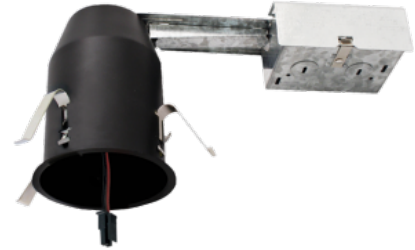


3" IC Airtight Remodel Housing for Koto™ Architectural LED Light Engine



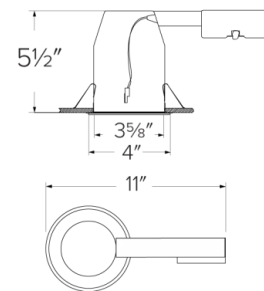
Features

- IC Airtight for direct contact with insulation.
- Koto™ Architectural Housing: 120V Triac/ELV.
- Must be used with Architectural Koto™ LED Light Engines (ELK19 or ELK21 Series).
- Lumen output based on module.

Specifications

| | |
|-----------------|------------------------------|
| Wattage | 10.5W - 11.8W |
| Lumens | 750 (ELK19) - 950 (ELK21) lm |
| Voltage | 120/277V or 120V |
| Dimmable | Triac/ELV, 0-10V/Triac/ELV |

Dimensions



Technical Details

Lamp: Designed for use with ELCO Architectural Koto™ LED Light Engines (ELK19 or ELK21 Series)

Construction:

- Single Wall IC Rated for direct contact with insulation, for use in IC or non-IC conditions.
- Housing accommodates up to 1 1/2" ceiling thickness.
- Airtight housing with gasket to restrict airflow in accordance with ASTM E-283 air-tight requirements.

Installation: Designed for ceiling plenums where 2x6 joists or taller joists are used. Maximum hole cutout is 3 5/8". See installation sheet for detailed information.

Junction Box: Positioned to accommodate straight conduit runs. Seven 1/2" trade size conduit knockouts, four 3/4" knockouts. Pry-out knockout slots. 4 Romex pryouts with strain relief.

Electrical:

- Input Voltage: 120V.
- High efficiency driver with power factor >0.9

Dimmability:

- Triac/ELV

Listings:

- UL Listed for Damp Location.
- UL Listed for Wet Location with select trims.
- UL Listed for Feed Through.
- UL Listed for Direct Contact with Insulation and Combustible Material.
- Airtight per ASTM E-283.
- Install a JA8-2016-E lamp/luminaire for Title 24 Compliance.

Warranty: ELCO Lighting warrants products will be free from defects in materials and workmanship for a period of 5 years.

Product Numbers

| Item | Description | Lumens | Watts | Voltage | Dimming |
|--------------------|-------------|------------------------------|-------|----------|-----------------|
| E3LK65RICA | Remodel | 750 (ELK19) - 950 (ELK21) lm | 10.5W | 120V | Triac/ELV |
| E3LK66RICAD | Remodel | 750 (ELK19) - 950 (ELK21) lm | 11.8W | 120/277V | 0-10V/Triac/ELV |

Product Number Builder

Example: **E3LK65RICA**

3" Koto™ Standard ICA Remodel Housing

Voltage

Dimming

E3LK

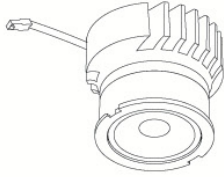
- 65** 120V
- 66** 120/277V

- RICA** Triac/ELV
- RICAD** 0-10V/Triac/ELV

Compatible Products

For use with Dedicated 3" Architectural ICA LED Housings

Koto™ Architectural LED Light Engine



Koto™ LED Light Engine
ELK19 - ELK21

| PRODUCT NUMBER BUILDER | | | |
|------------------------|----------------|--------------------------------|-----------------------------|
| Koto™ LED Light Engine | Lumens | Color Temperature | Beam Angle |
| ELK | | | |
| 19 | 750 - 850 lm | 27D 2700K | (blank) 38° lens (Standard) |
| 21 | 1100 - 1500 lm | 30D 3000K | -S 18° lens |
| | | 35D 3500K | -N 25° lens |
| | | 40D 4000K | -W 60° lens |
| | | SD Sunset Dimming (ELK19 Only) | |

| ACCESSORIES | |
|---|-------------------|
| | |
| Lens | Reflectors |
| EP731C 18° Lens | EP735C 15° |
| EP732C 25° Lens | EP736C 25° |
| EP733C 38° Lens | EP737C 38° |
| EP734C 60° Lens | EP738C 60° |
| <small>*EP732C, EP733C, EP734C Included</small> | |
| | |
| Secondary Optics | |
| L45 Hex Louver | |
| L46 Linear Louver | |
| L47 Spread Louver | |

3" Pex™ Twist-&-Lock Trims



Deep Reflector

ELK3618
Finishes:
(W, BB, BZ, B, C, H)



Adjustable Gimbal

ELK3629
Finishes:
(W, BB, BZ, B, C, H)



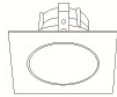
Adjustable Pinhole

ELK3627
Finishes:
(B, BB, BZ)



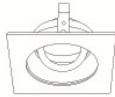
Adjustable Baffle

ELK3693
Finishes:
(W)



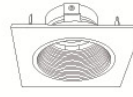
Sq. Deep Reflector

ELK3318
Finishes:
(W, BB, BZ, B, C, H)



Sq. Adjustable Gimbal

ELK3329
Finishes:
(W, BB, BZ, B, C, H)



Sq. Adjustable Baffle

ELK3393
Finishes:
(W)



Sq. Adjustable Pinhole

ELK3327
Finishes:
(B, BB, BZ)

*Finishes: **W** - All White, **BB** - All Black, **BZ** - All Bronze, **B** - Black Reflector w/White Ring, **C** - Chrome Reflector w/White Ring, **H** - Haze Reflector w/White Ring