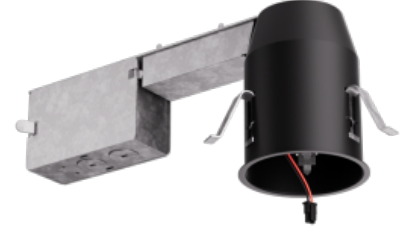


2" IC Airtight Remodel Housing for Koto™ Architectural LED Light Engine



Features

- IC Airtight for direct contact with insulation.
- Koto™ Architectural Housing: 120V Triac/ELV.
- Must be used with Architectural Koto™ LED Light Engines (ELK19 or ELK21 Series).
- Lumen output based on module.

Specifications

Lumens	750 (ELK19) - 950 (ELK21) lm
Voltage	120V
Dimmable	Triac/ELV

Technical Details

Lamp: Designed for use with ELCO Architectural Koto™ LED Light Engines (ELK19 or ELK21 Series)

Construction:

- IC Rated for direct contact with insulation, for use in IC or Non-IC conditions.
- Housing accommodates up to 1 1/2" ceiling thickness.
- Airtight housing with gasket to restrict airflow in accordance with ASTM E-283 air-tight requirements.

Installation: Designed for ceiling plenums where 2x6 joists or taller joists are used. Maximum hole cutout is 3 1/4". See installation sheet for detailed information.

Junction Box: Positioned to accommodate straight conduit runs. Seven 1/2" trade size conduit knockouts, four 3/4" knockouts. Pry-out knockout slots. 4 Romex pryouts with strain relief.

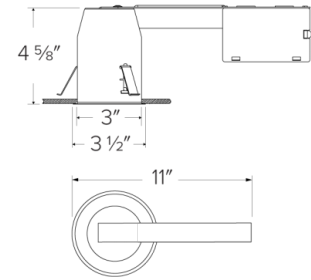
Electrical: Input Voltage: 120V. High efficiency driver with power factor >0.9

Dimmability: Triac/ELV

Listings:

- UL Listed for Damp Location.
- UL Listed for Wet Location with select trims.
- UL Listed for Feed Through.
- UL Listed for Direct Contact with Insulation and Combustible Material.
- Airtight per ASTM E-283.
- Install a JA8-2016-E lamp/luminaire for Title 24 Compliance.

Warranty: ELCO Lighting warrants products will be free from defects in materials and workmanship for a period of 5 years.



Product Numbers

Item	Description	Lumens	Voltage	Dimming
E2LK57RICA	Remodel	750 (ELK19) - 950 (ELK21) lm	120V	Triac/ELV

Product Number Builder Example: E2LK57RICA

2" Koto™ Standard ICA Remodel Housing

E2LK

Voltage

57 120V

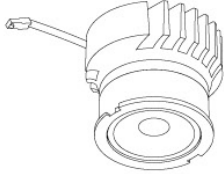
Dimming

RICA Triac/ELV

Compatible Products

For use with Dedicated 2" Koto Architectural ICA LED Housings

Koto™ Architectural LED Light Engine



Koto™ LED Light Engine
ELK19 - ELK21

PRODUCT NUMBER BUILDER			
Koto™ LED Light Engine	Lumens	Color Temperature	Beam Angle
ELK			
19	750 - 850 lm	27D 2700K	(blank) 38° lens (Standard)
21	1100 - 1500 lm	30D 3000K	-S 18° lens
		35D 3500K	-N 25° lens
		40D 4000K	-W 60° lens
		SD Sunset Dimming (ELK19 Only)	-FC 18° - 50° Adjustable (ELK21 Only)

ACCESSORIES



Lens

- EP731C 18° Lens
- EP732C 25° Lens
- EP733C 38° Lens
- EP734C 60° Lens

*EP732C, EP733C, EP734C Included



Snoot

- L50W White
- L50B Black



Secondary Optics

- L45 Hex Louver
- L46 Linear Lens
- L47 Spread Louver
- L49 Frosted Lens
- L51 Color Shifter

2" Pex™ Twist-On Trims



Round Deep Reflector

ELK2818
Finishes:
(W, B, H, BB, BZ)



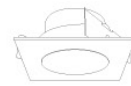
Round Adjustable Reflector

ELK2829
Finishes:
(W, B, H, BB, BZ)



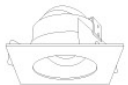
Round Adjustable Pinhole

ELK2827
Finishes:
(W, B, BB, BZ)



Square Deep Reflector

ELK2518
Finishes:
(W, B, BB)



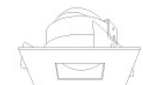
Square Adjustable Reflector

ELK2529
Finishes:
(W, B, BB)



Square Reflector

ELK2541
Finishes:
(W, B, BB)



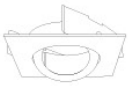
Square Adjustable Pinhole

ELK2527
Finishes:
(W, B, BB)



Round Gimbal

ELK2888
Finishes:
(W, B, BB)



Square Gimbal

ELK2588
Finishes:
(W, BZ)