

ELCO Lume
Architectural Division



The
Birch™
System

Commercial Birch™ LED Module
& 4", 6" & 8" Twist-On Trims

EL **ELCO** Lighting
The Best Choice in Lighting



The **Birch**[™] Module, Twist-On Trims & Frames

A full line of sleek and modern high quality commercial grade LED Lighting developed to provide offices, conference rooms, lobbies, retail, medical or any hospitality space a more sophisticated finish. The term "commercial grade" mean increase durability and advanced lighting technology on spacious spaces. The Birch[™] System offers maximum flexibility and premium grade optics that will provide designers and architects the necessary choices when layout a room, whether spot lighting a specific space or lighting up a room these system will meet any project needs.

The Birch™ System

Commercial LED Downlights



SIZES	BEAM ANGLES	FINISHES	LUMENS	COLOR TEMPERATURE
<p>4"</p> <p>6"</p> <p>8"</p>	<p>Adjustable Focus Birch™ Pro: 25° - 45° Birch™ High Lumen: 22° - 50°</p>	<p>White</p> <p>Haze</p>	<p>750 lm to 3000 lm</p>	<p>2700K - 5000K</p>

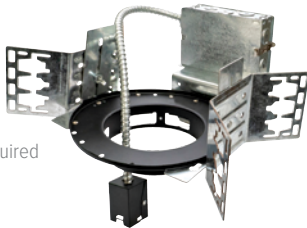
The Birch™ System

High quality commercial LED Lighting developed to provide offices, conference rooms, lobbies, retail, medical or any hospitality space a more sophisticated finish. Featuring the most energy-efficient technology in the industry and maximum flexibility. The Birch™ System makes installation a breeze.

STEP 1 Recessed Application Options

4", 6", or 8"
Architectural
Frames

- Hangers bars required
- Sold separately



Flat Hanger Bars

C-Channel Hanger Bars



4", 6", or 8"
Plaster Frame



Remodel/ Retrofit

Retrofit



OPTIONAL



KEM-LD5
90 Minute
Emergency
Battery Backup

STEP 2 LED Module Options



CCT SWITCH
LUMEN Switch

Birch™ Pro LED Module

- IC Rated for direct contact with insulation, for use in IC and Non-IC applications
- 3-Lumen Switch (750 lm - 1500 lm)
- 5-CCT Switch
2700K, 3000K, 3500K, 4000K, 5000K
- 25° - 45° Adjustable Focus Beam Angle



LUMEN Switch

Birch™ High Lumen LED Module

- Non-IC, for use in Non-IC applications
- 3-Lumen Switch (1250 lm - 3000 lm)
- 3000K, 3500K, 4000K Color Temperature options
- 22° - 50° Adjustable Focus Beam Angle

STEP 3 Trim Options

4", 6", or 8" Reflector Trims
• Available in White or Haze finish





The Birch™ System can be easily installed using any of our recessed applications options: Architectural Frame or Plaster Frame for new construction ceilings, the Remodel applications with its own junction box, and the Retrofit for existing commercial applications

New Construction

Easy to install Birch™ System downlight to our Architectural or Plaster frames.

Remodel/Retrofit

Add Birch™ System downlighting to an existing ceiling.

Retrofit

Add Birch™ System downlighting to an existing commercial application with a junction box on site.



Architectural Lighting at its best!

The Birch™ LED Modules are designed around premium technology. The beautifully designed die-cast module houses powerful and advanced LED technology to provide increased durability and outstanding illumination.



KEY ELEMENTS:

- 0-10V dimming
- 120/277V Driver with 93+ CRI
- ETL Listed for damp locations
- Adjustable Focus beam angles
- Twist-on mechanism for easy trim installation
- Encased quick connect for easy installation



Switch to the best option!

Whether you need a high lumen output with a warm color temperature, or a low lumen output with a cool color temperature the Birch™ System LED Modules provides all the options.

Birch™ Pro LED Module

Select color temperature and lumen output by using the switch on the module

Color Temperature	Value
WARM WHITE	2700K
SOFT WHITE	3000K
NEUTRAL WHITE	3500K
BRIGHT WHITE	4000K
DAY LIGHT	5000K

5 CCT

Lumen Output	Value	Power
▲ 15L	1500 lm	(20W)
▲ 10L	1000 lm	(12W)
▼ 7L	750 lm	(10W)

IC RATED

Birch™ High Lumen LED Module

Select lumen output by using the switch on the module

Lumen Output	Value	Power
▲ 30L	3000 lm	(35W)
▲ 20L	2000 lm	(20W)
▼ 12L	1250 lm	(13W)

Beam angle control with a twist!

Using industry leading technology the Birch™ LED Module gives you the option to choose the beam angle with a simple twist of the lens. Our Adjustable Focus Beam Angle allows you to manually choose a beam angle from a narrow spot to a wide flood with the ease of a twist. Giving designers and architects choices when laying out a room, whether the downlight is spot lighting a specific space or lighting up a room these modules have the necessary beam angle options.



Redefining the meaning of easy installation!



The Twist-On Mechanism

Our Birch™ twist-on system makes installation a breeze. Utilizing the same connection mechanism across the Birch™ System, modules can easily be locked onto any size trim.

The Encased Quick Connect

Our Birch™ LED modules feature an encased quick connect for easy module installation. These high-quality LED modules have redefined the meaning of easy installation and maintenance.

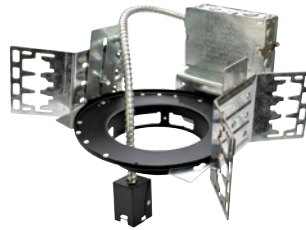
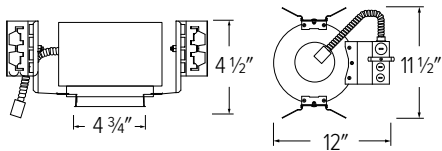


Birch™ Commercial Frames

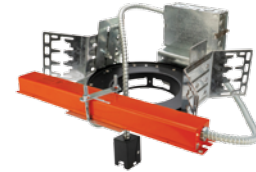
Encased Quick Connect for easy Module installation and maintenance. Emergency Battery Backup available.

4" Architectural Frame

- Hanger bars required



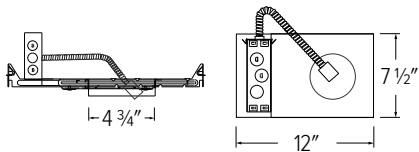
ELB4EH
New Construction Frame



ELB4EH-EM5
New Construction with 90 min
Emergency Battery Backup

4" Plaster Frame

- New Construction frame with hanger bars



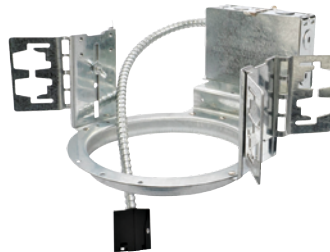
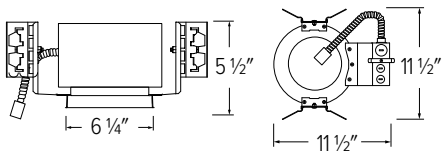
ELB4PF
New Construction Frame



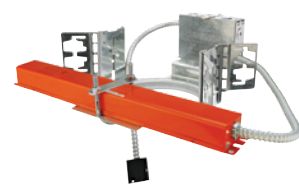
ELB4PF-EM5
New Construction with 90 min
Emergency Battery Backup

6" Architectural Frame

- Hanger bars required



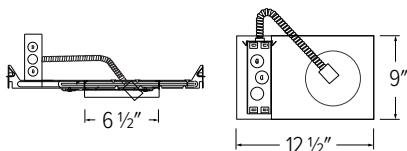
ELB6EH
New Construction Frame



ELB6EH-EM5
New Construction with 90 min
Emergency Battery Backup

6" Plaster Frame

- New Construction frame with hanger bars



ELB6PF
New Construction Frame



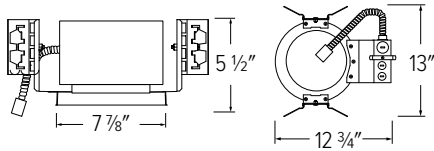
ELB6PF-EM5
New Construction with 90 min
Emergency Battery Backup

Birch™ Commercial Frames

Encased Quick Connect for easy Module installation and maintenance. Emergency Battery Backup available.

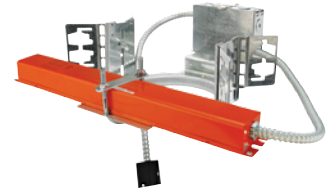
8" Architectural Frame

- Hanger bars required



ELB8EH

New Construction Frame

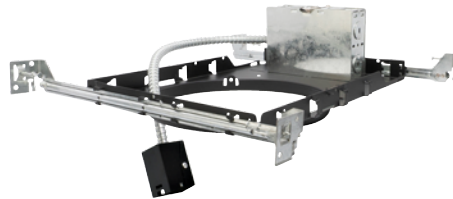
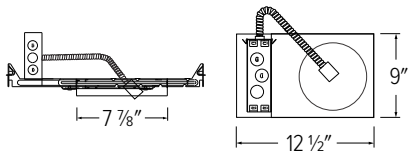


ELB8EH-EM5

New Construction with 90 min
Emergency Battery Backup

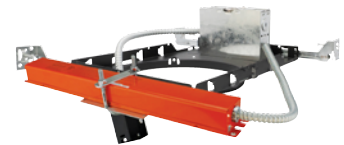
8" Plaster Frame

- New Construction frame with hanger bars



ELB8PF

New Construction Frame



ELB8PF-EM5

New Construction with 90 min
Emergency Battery Backup

Hanger Bars for Birch™ Architectural Frames

27" Flat Hanger
Bars for Wood
Construction (Set of 2)



FB27

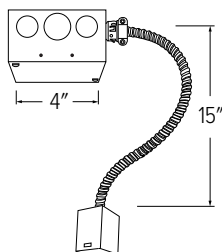
26" C-Channel
Hanger Bars for
T-Bar Ceilings (Set of 2)



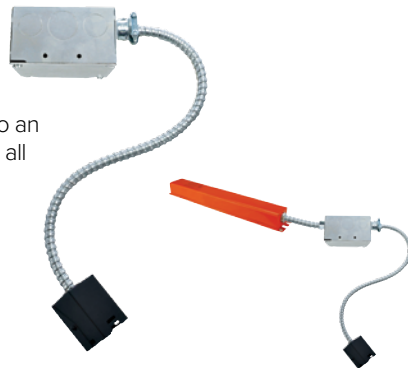
CH26

Birch™ Remodel/Retrofit

- Add architectural downlighting to an existing ceiling. Compatible with all sizes Birch™ trims and modules.



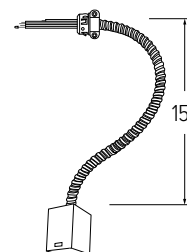
ELBRMD
Remodel



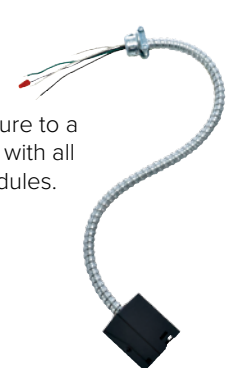
ELBRMD-EM5
Remodel/Retrofit with 90 min
Emergency Battery Backup

Birch™ Retrofit

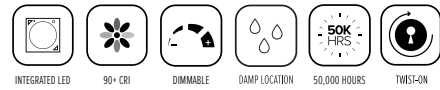
- To convert an existing fixture to a Birch™ fixture. Compatible with all sizes Birch™ trims and modules.



ELBRT
Retrofit



Birch™ LED Modules



Works with 4", 6" & 8" Birch™ Commercial Frames & Twist-On Trims



5-CCT Switch
2700K, 3000K, 3500K,
4000K, 5000K

Lumen Switch
15L - 1500 lm (20W)
10L - 1000 lm (12W)
7L - 750 lm (10W)

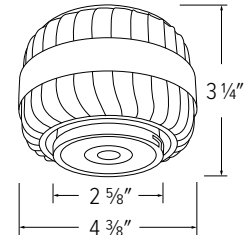
ELB15RCT51CA
2700K - 5000K
750 lm - 1500 lm



Birch™ Pro LED Module 750 lm - 1500 lm with 5-CCT Switch

- IC Rated for direct contact with insulation, for use in IC and Non-IC applications
- Select Color Temperature (2700K to 5000K) and Lumen output (750 lm to 1500 lm) by using switch on module
- Adjustable Focus beam angle allows for manual beam angle adjustment from 25°-45° range with the ease of a twist
- 120/277V input with 0-10V dimming

Input Power	10W / 12W / 20W
Lumens	750 / 1000 / 1500
Input Voltage	120/277V
Color Temp.	2700K - 5000K
CRI	93+
Damp Location	ETL listed
Dimmable	0-10V
Beam Angle	25°-45°



Lumen Switch
30L - 3000 lm (35W)
20L - 2000 lm (20W)
12L - 1250 lm (13W)

ELB30R30
3000K
1250 lm - 3000 lm

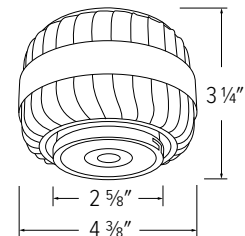
ELB30R35
3500K
1250 lm - 3000 lm

ELB30R40
4000K
1250 lm - 3000 lm

Birch™ High Lumen LED Module 1250 lm - 3000 lm

- Non-IC, for use in Non-IC applications
- Select Lumen output (1250 lm to 3000 lm) by using switch on module
- Adjustable Focus beam angle allows for manual beam angle adjustment from 22°-50° range with the ease of a twist
- 120/277V input with 0-10V dimming

Input Power	13W / 20W / 35W
Lumens	1250 / 2000 / 3000
Input Voltage	120/277V
Color Temp.	3000K, 3500K, 4000K
CRI	93+
Damp Location	ETL listed
Dimmable	0-10V
Beam Angle	22°-50°



Birch™ Trims

Self-flanged spun aluminum reflectors with twist-on system for easy installation

The sleek and clean looking Birch™ System Trims will blend seamlessly into your commercial space. These trims offer a light source aperture of 2 5/8" and a deep reflector that delivers smooth and abundant light distribution with minimal glare. Features twist-on system for easy installation to Birch System modules and spring loaded mounting clips to hold them tightly into the ceiling.



TWIST-ON



Twist-On System



Spring Loaded Mounting Clips

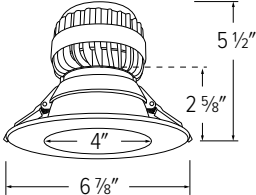
4" Birch™ Round Reflector Trims



ELB410W
White



ELB410H
Haze



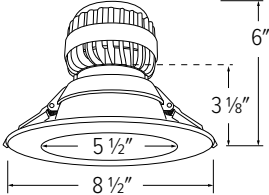
6" Birch™ Round Reflector Trims



ELB610W
White



ELB610H
Haze



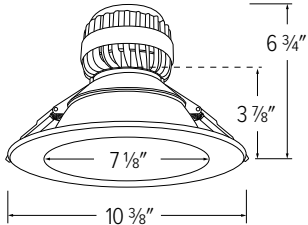
8" Birch™ Round Reflector Trims



ELB810W
White



ELB810H
Haze



ELCAT1063



EL ELCO Lighting

Corporate Headquarters

2042 E. Vernon Ave.
Vernon, CA 90058
Tel: 323.231.2600
Fax: 323.231.3200
elcolighting.com

Customer Service

Tel: 800.522.2626
Fax: 800.644.2626
orderdesk@elcolighting.com
customerservice@elcolighting.com
sales@elcolighting.com

Printed in the U.S.A. 12/20
\$10.00

RV1

© ELCO Lighting. The marks appearing in this catalog are registered trademarks of ELCO Lighting. Other marks used herein are recognized trademarks of their respective companies. Products shown in this brochure may be covered by U.S. and international patents. Specifications subject to change without notice.