

# Birch™ 6" New Construction Architectural Frame



## Features

- Encased Quick Connect for easy module installation and maintenance
- Optional 90 minutes Emergency Battery Backup
- Hanger bars required (sold separately)

## Technical Details

**Construction:** Constructed from 16 gauge galvanized steel for large architectural applications

**Installation:** Designed for commercial architectural buildings. Easily installed with hanger bars (sold separately). Light engine installed into frame

**Junction Box:** Positioned to accommodate straight conduit runs. 1/2" trade size conduit knockouts and pry-out knockout slots for easy romex installation

**Hanger Bars:** Hanger bars sold separately as FB27 - Set of two 27" hanger bars for wood construction or CH26 - Set of two 26" C-Channel hanger bars for T-Bar Ceiling

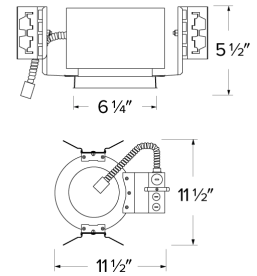
**Warranty:** ELCO Products are built to last. 5-year Limited warranty

## Options



**Optional Battery Backup**

## Dimensions



## Product Numbers

Item	Description
<b>ELB6EH</b>	New Construction Architectural Frame
<b>ELB6EH-EM5</b>	New Construction Architectural Frame with Emergency Battery Backup

## Product Number Builder Example: ELB6EH

Birch™ 6" New Construction Architectural Frame

Optional

**ELB6EH**

No Battery Backup

**-EM5** Emergency Battery Backup

# Compatible Products

For use with Birch™ Architectural Frames

## Birch™ LED Modules



**Birch™ Pro** LED Module with 5-CCT Switch (750 lm - 1500 lm)

CAT NO.	COLOR TEMPERATURE	SPECIFICATIONS
ELB15RCT5ICA	5-CCT Switch 2700K, 3000K, 3500K, 4000K, 5000K	<ul style="list-style-type: none"> <li>• IC Rated, for use in IC and Non-IC applications</li> <li>• 750 lm - 1500 lm (10W - 20W)</li> <li>• Beam Angle adjustment from 25°-45°</li> <li>• 120/277V input with 0-10V dimming</li> </ul>



**Birch™ High Lumen** LED Module (1250 lm - 3000 lm)

CAT NO.	COLOR TEMPERATURE	SPECIFICATIONS
ELB30R30	3000K	<ul style="list-style-type: none"> <li>• Non-IC, for use in Non-IC applications</li> <li>• 1250 lm - 3000 lm (13W - 30W)</li> <li>• Beam Angle adjustment from 22°-50°</li> <li>• 120/277V input with 0-10V dimming</li> </ul>
ELB30R35	3500K	
ELB30R40	4000K	

## 4", 6", & 8" Birch™ Twist-On Trims



**4" Round Reflector**



**6" Round Reflector**



**6" Round Adjustable Reflector**



**8" Round Reflector**

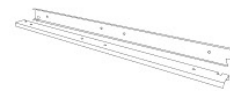
CAT NO.	SPECIFICATIONS	CAT NO.	SPECIFICATIONS	CAT NO.	SPECIFICATIONS	CAT NO.	SPECIFICATIONS
ELB410W	All White	ELB610W	All White	ELB629W	All White	ELB810W	All White
ELB410BB	All Black	ELB610BB	All Black	ELB629B	All Black	ELB810H	All Haze (Semi-Specular)
ELB410H	All Haze (Semi-Specular)	ELB610H	All Haze (Semi-Specular)	ELB629H	All Haze (Semi-Specular)		
ELB410HW	Haze with White Trim	ELB610HW	Haze with White Trim				

## Hanger Bars for Birch™ Architectural Frames



**27" Flat Hanger Bars**

CAT NO.	SPECIFICATIONS
FB27	For wood construction, Set of 2



**26" C-Channel Hanger Bars**

CAT NO.	SPECIFICATIONS
CH26	For T-Bar Ceilings, Set of 2