



PG Series

EMERGENCY LED SCNCE

DATE: _____ LOCATION: _____

TYPE: _____ PROJECT: _____

CATALOG #: _____

PG Series



FEATURES

- No heads to aim, no adjustments to make
- Includes Spectron® self-testing/self-diagnostic electronics with time-delay retransfer (TDR) standard
- Sturdy die-cast aluminum construction
- Time delay retransfer circuit
- Brownout detection circuit
- Low Voltage Battery Disconnect
- Universal 120/277 VAC operation
- 90 minute emergency operation
- Microprocessor controlled battery environmental chamber
- Fast, easy installation



SPECIFICATIONS

APPLICATION

- The PG is an indoor/outdoor, die-cast architectural emergency unit
- It is a wet location listed, emergency luminaire with high-output LED technology that provides path of egress illumination for mounting over entrance/exit ways and perimeter walkways
- Spectron® self-testing/self-diagnostic electronics are included standard
- A battery heater for cold temperature operation is available as an option

CONSTRUCTION

- Housing and mounting plate are constructed of 0.125" die-cast aluminum and 0.125" closed-cell, medium density, neoprene gasket
- The acrylic lens allows 92% light transmission. The reflector is electro-polished aluminum with 95% reflectance
- Housing finish is powder coated electro-deposition paint available in four colors: dark bronze, white, platinum silver and black

INSTALLATION

- Universal housing knockouts for mounting to standard 31/2" and 4" octagon and 4" square electrical boxes
- A 1/2" – 1/4 NPT threaded conduit opening is provided at the top of the housing and sealed with a closure plug
- The back plate mounts to the wall surface using installer supplied hardware
- The housing “snaps” to the back plate by a “pin and socket” arrangement, and is secured with two Fillister head screws
- AC Lockout feature prevents battery discharge prior to initial unit power-up saving installation time

COMPLIANCES

- UL 924 Listed (emergency models only)
- UL Wet Location Listed
- NFPA 101 Life Safety Code
- NFPA 70 National Electrical Code
- OSHA
- U.S. Patent No. D627,916

WARRANTY

- LED Lifetime Warranty
- Fixture: 5 Years Full
- Battery: 2 Years Full, 8 Years Pro Rata



PG Series

EMERGENCY LED SCONCE

DATE: _____ LOCATION: _____

TYPE: _____ PROJECT: _____

CATALOG #: _____

ORDERING GUIDE

Example: PGW

CATALOG #

PG		Options	
Model	Finish		
PG	Emergency LED Sconce	W	White
		Z	Dark Bronze
		P	Platinum Silver
		B	Black
		HTR	Battery Heater (Add Suffix to Model)

ELECTRONICS

Upon failure of the normal utility power, a solid-state transfer switch automatically activates the emergency lamp. Upon resumption of the normal utility power, the battery is disconnected from the load and recharged through a solid-state charging unit. A low voltage battery disconnect feature protects the battery from severe damage during prolonged power failures. Spectron® self-testing/self-diagnostic circuitry provides automatic system testing on a monthly and semi-annual basis. Manual testing is available at any time using the push-to-test button: push once for a 60-second system test; push twice for a 90-minute system test.

Number of Lamps: Four high output LEDs

Lamp Configuration: Two sets of 2 LEDs provide illumination. In the unlikely event that any single LED should fail the remaining LEDs will continue to function.

Lamp Type: Solid state high output LEDs

Lamp Color: Cool White, 6350K

Total Lamp Output: 405 Lumens

Input: 120/277VAC, 60 Hz

Battery Charger: Temperature compensating, constant current

Transfer: Solid state

Functional Circuitry: AC lockout, transformer isolation, transient surge protection, low voltage battery disconnect, brownout detection, time delay retransfer

Battery Recharge Cycle: per UL time standards

Test Means: Integral test switch

Battery: Sealed, maintenance-free Nickel-Cadmium

Operating Temperature Range for Models without Heater: 0°C to 50°C (32°F to 122°F)

Operating Temperature Range for Models with Heater: -30°C to 50°C (-22°F to 122°F)

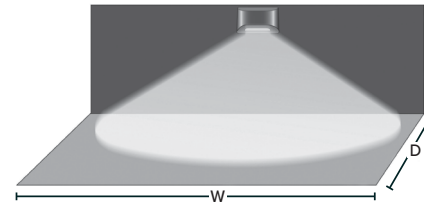
POWER CONSUMPTION

PG	Models without Heater		Models with Heater	
	120VAC	2.78Watts	120VAC	15.2 watts
	277VAC	2.88 watts	60	15.7 watts

Power factor, average: 0.8 (lagging)

ILLUMINATION PATTERN

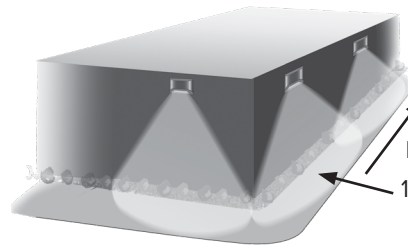
SINGLE UNIT COVERAGE



Mounting Height: 9'
Outdoor Reflectance: 0/30/10
Indoor Reflectance: 80/50/20

	Indoor	Outdoor
1 FC Average (W x D)	33' X 10'	27' X 10'
1 FC Minimum (W x D)	10' X 10'	9' X 10'

MULTIPLE UNIT SPACING



Mounting Height: 9'
Illuminated Path Depth: 6'
Outdoor Reflectance: 30/10
Indoor Reflectance: 80/50/20

	Indoor	Outdoor
1 FC Average	44'	33'
1 FC Minimum	16'	15'

DIMENSIONS

