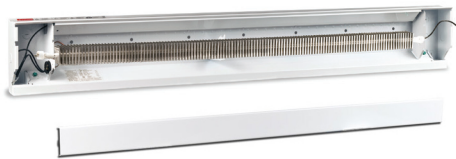


CADET 

# ELECTRIC BASEBOARD HEATER



- Practical design is ideal for new construction and built to last
- Easy installation with pre-punched markings at 1-inch intervals
- Universal wiring available at either end
- Proven construction helps maximize surface area and funnel heated air
- Place under a window for best results
- Includes high-temperature safety shutoff feature
- Powder coated for a smooth, durable finish
- Lifetime warranty

**Take the chill out of any room with our most popular baseboard heater. Enjoy the simple warmth of reliable, quiet convection heat. All our Cadet baseboards are designed for easy installation and will keep you warm for years to come.**

## ARCHITECTURAL - ENGINEERING INFORMATION

Electric baseboard heaters are UL listed, factory rated at 120V, 208V, and dual rated from 208V to 240V. Element is steel sheathed calrod element with channel shaped aluminum fins. A full length capillary sensor tube is an integral part of each unit. Case, cover, and deflector are made of 24 gauge steel with 20 gauge junction boxes containing a grounding screw. All metal pieces are finished with a powder coat paint system.

## TECHNICAL INFORMATION

Baseboard heaters work best when placed under a window and at least 12 inches away from furniture or other objects. Keep at least 12 inches minimum from objects hanging above (i.e., drapes). Do not install below electrical outlets. The electric baseboard heater may be placed directly on the floor and mounted to the wall.

All models require hard-wire installation (no cord or plug).



# ELECTRIC BASEBOARD

Dimensions: 6-3/4" H x 2-1/2" D x Various lengths

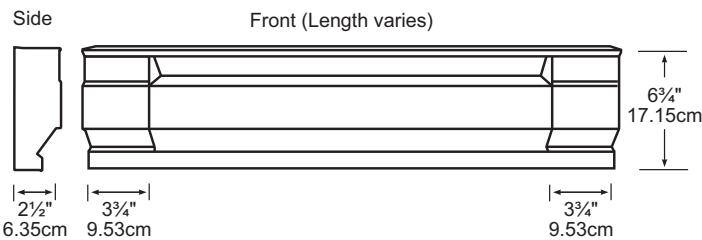
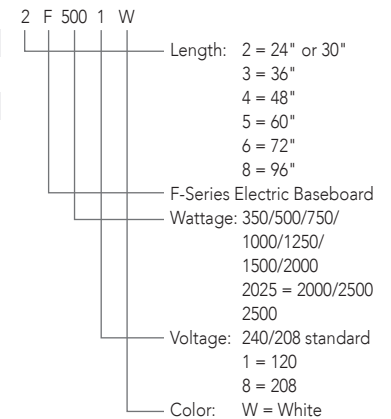
All models require a thermostat. Accessories below. Color: white

PART	MODEL	DESCRIPTION	WATTS	VOLTS	AMPS	BTUS	WT/LBS
05530	2F500-1W	30" baseboard	500	120	4.2	1710	6
05532	3F750-1W	36" baseboard	750	120	6.3	2560	7
05534	4F1000-1W	48" baseboard	1000	120	8.3	3415	9
05536	6F1500-1W	72" baseboard	1500	120	12.5	5120	12
11924-1	2F500-8W	30" baseboard	500	208	2.4	1710	6
11934	3F750-8W	36" baseboard	750	208	3.6	2560	7
11944	4F1000-8W	48" baseboard	1000	208	4.8	3415	9
11954-1	5F1250-8W	60" baseboard	1250	208	6.0	4265	10
11964	6F1500-8W	72" baseboard	1500	208	7.2	5120	12
11984	8F2000-8W	96" baseboard	2000	208	9.6	6825	16
10924	8F2500-8W	96" baseboard	2500	208	12.0	8530	18
09949	2F350W	24" baseboard	350/262	240/208	1.5/1.3	1195/895	5
09950	2F500W	30" baseboard	500/375	240/208	2.1/1.8	1710/1280	6
09952	3F750W	36" baseboard	750/563	240/208	3.1/2.7	2560/1925	7
09954	4F1000W	48" baseboard	1000/750	240/208	4.2/3.6	3415/2560	9
09955	5F1250W	60" baseboard	1250/937	240/208	5.2/4.5	4265/3200	10
09956	6F1500W	72" baseboard	1500/1125	240/208	6.3/5.4	5120/3840	12
09958	8F2000W	96" baseboard	2000/1500	240/208	8.3/7.2	6825/5120	16
09960	8F2025W	96" baseboard	2500/2000 1875/1500	240 208	10.4/8.3 9.0/7.2	8530/6825 6400/5120	18
03360	8F2500W	96" baseboard	2500/1875	240/208	10.4/9.0	8530/6400	18

## BASEBOARD ACCESSORIES

PART	MODEL	DESCRIPTION	VOLTS	AMPS
08734	BTF2W	Built-in thermostat kit, double pole, retail pack, 40°F to 85°F	120/208/240	22
14925	BTF2W	Built-in thermostat kit, double pole, 40°F to 85°F	120/208/240	22
08732	BTF1W	Built-in thermostat kit, single pole, retail pack, 40°F to 85°F	120/208/240	22
14915	BTF1W	Built-in thermostat kit, single pole, 40°F to 85°F	120/208/240	22

### Model No. Code



BTF2W



BTF1PW