

# NEFLINTW-R4MPW

4" E-Series FLIN Round LED Downlight with Selectable CCT

Source: 10.5W  
Up to 950lm

Type
Project
Catalog No.
Notes

## PRODUCT DESCRIPTION

E-Series FLIN is a thin recessed LED designed for easy installation into new construction or remodel applications. Luminaires include a selectable color temperature switch located on the junction box of each luminaire with a quick connect that allows for easy disconnect and mounting in the ceiling.

## FEATURES

- No housing required and includes junction box with class 2 driver
- Quick installation and cost savings
- Junction box includes kelvin temperature switch
- IC Air-Tight rated
- Field selectable color temperature
- Triac or ELV dimming
- cETLus Listed for Wet Locations
- 5-year limited warranty

## SPECIFICATION

**Construction:** Die-cast aluminum luminaire with spring clips for easy installation. Gasket included for air-tight and wet location listing without additional caulking.

**Air Flow Restriction:** Luminaire has factory installed gasket to restrict airflow from room into ceiling plenum to <2CFM (cubic feet per minute) in accordance with ASTM E283 Air-Tight requirements.

**Lens:** Regressed lens with sharp baffle cuts reduces aperture brightness. Special polymer lens produces more usable light and lumens per watt.

**Junction Box:** Prewired junction box includes quick connect to LED fixtures for ease of installation. Junction box includes two 1/2" trade size and two 3/8" trade size knockouts and snap on cover. Maximum of 4 No. 12 AWG through branch circuit conductor suitable for 90°C permitted in box. [Fixture wire length: 5" and Junction box wire length: 9"]

**Mounting:** No housing is required, two tensions steel spring clips secure luminaires to the ceiling. Luminaires accept ceiling thicknesses from 3/8" to 5/16". New construction frame-in kits are available, see accessories.

**Minimum clearance:** "IC" Insulated ceiling housings are direct contact rated; no minimum clearance is required.

## ELECTRICAL

**Voltage:** 120VAC or 120-277VAC  
**Lumens / Wattage:** Up to 950lm / 10.5W  
**Color Temperature:** Selectable CCT (2700K / 3000K / 3500K / 4000K / 5000K)  
**Color Rendering Index:** 90+ CRI  
**Beam Spread:** 115° Wide Flood  
**Operating Temperature:** 0°C to 35°C  
**Lifetime:** 50,000 hours @ L70  
**Dimming:** Dimmable down to 10% with Triac or ELV dimmer  
[Click Here](#) or check complete dimmer list at [www.NoraLighting.com](http://www.NoraLighting.com) in the "Compatibility" page under "Resources" tab

## OPTIONAL ACCESSORIES

**NEFLINTW-4OR-MPW:** Oversize Ring  
**NEFLINTW-EW-4:** 4' Quick Connect Linkable Cable  
**NEFLINTW-EW-20:** 20' Quick Connect Linkable Cable  
**NF-R246:** Universal New Construction Frame-In

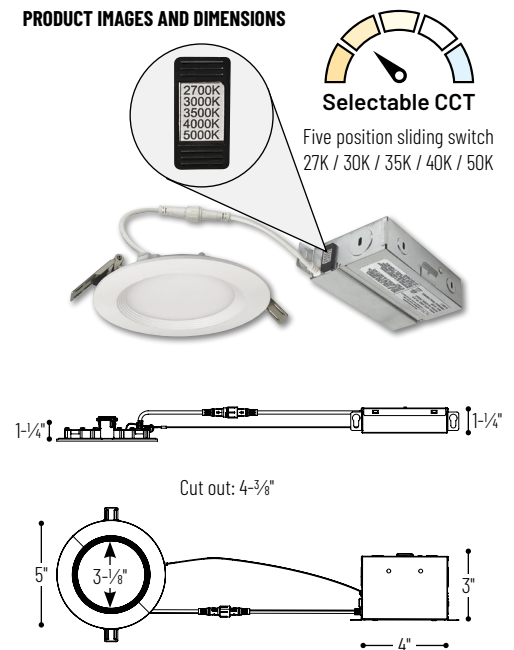
## LABELS AND LISTINGS

- cETLus Listed for Wet location
- ENERGY STAR certified
- Certified to the high efficacy requirements of California Title 24 JA8-2022
- [5-Year Limited Warranty](#)
- FCC Compliant



Performance Data		
Part Number	Lumens	CCT
NEFLINTW-R4MPW	861lm	2700K
NEFLINTW-R4MPW	894lm	3000K
NEFLINTW-R4MPW	943lm	3500K
NEFLINTW-R4MPW	964lm	4000K
NEFLINTW-R4MPW	966lm	5000K

## PRODUCT IMAGES AND DIMENSIONS



## 4" E-Series FLIN LED Round Downlight with Selectable CCT

Input Voltage
NEFLINTW-R4MPW = 120V input
NEFLINTW-R4MPWLE4 = 120-277V input

## Optional Accessories

Description
NEFLINTW-4OR-MPW = Oversize Ring
NEFLINTW-EW-4 = 4' Quick Connect Extension Cable
NEFLINTW-EW-20 = 20' Quick Connect Extension Cable
NF-R246 = Universal New Construction Frame-In

Example: NEFLINTW-R4MPW = 4" Round E-Series FLIN LED Downlight, Selectable CCT (2700K / 3000K / 3500K / 4000K / 5000K), Matte Powder White finish, 120V input

# NEFLINTW-R4

## 4" Round E-Series FLIN LED Downlight Accessories

Type	_____
Project	_____
Catalog No.	_____
Notes	_____



Oversize Ring for Round

### NEFLINTW-4OR-MPW

Oversize ring covers ceiling cut-outs up to 5-1/4"



Quick Connect Extension Cables

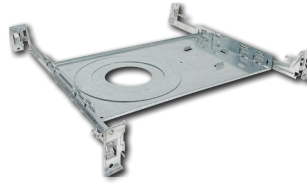
### NEFLINTW-EW-4

4'

### NEFLINTW-EW-20

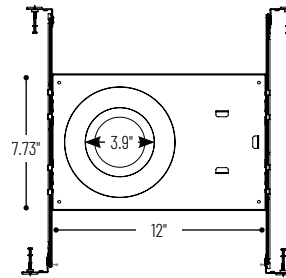
20'

Used to extend the length between luminaire and pre-wired junction box.



Universal New Construction Frame-In  
**NF-R246**

Universal new construction frame-in can be used to assist installing can-less recessed downlighting.



# PHOTOMETRICS

## 4" E-Series FLIN Round LED Downlight with Selectable CCT

Type

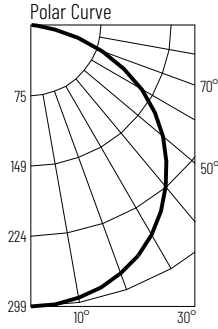
Project

Catalog No.

Notes

### Test Information

Test Number: NTR1918R1  
 Part Number: NEFLINTW-R4MPW  
 Beam Spread: 115° Wide Flood  
 Lumens: 861lm  
 Wattage: 10.12W  
 Efficacy: 85lpw  
 CCT / CRI: 2700K / 90 CRI  
 Spacing Criteria (0°-180°): 1.28  
 Spacing Criteria (90°-270°): 1.28



### Illuminance at a Distance

Distance from Luminaire	FC at Nadir	Beam Diameter
4'	18.7fc	12"-7"
6'	8.3fc	18"-10"
8'	4.7fc	25"-1"
10'	3fc	31"-5"
12'	2.1fc	37"-8"

### Zonal Lumen Summary

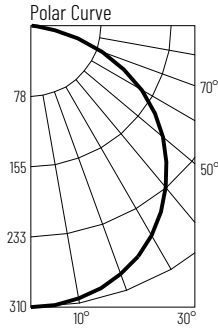
Zone	Lumens	% Luminaire
0-30	234	27.1
0-40	384	44.6
0-60	685	79.5
0-90	861	100
90-180	0	0
0-180	861	100

### Candela Table

Vertical Angles	Candela
0	299
5	298
15	288
25	270
35	241
45	204

### Test Information

Test Number: NTR1919R1  
 Part Number: NEFLINTW-R4MPW  
 Beam Spread: 115° Wide Flood  
 Lumens: 894lm  
 Wattage: 9.97W  
 Efficacy: 90lpw  
 CCT / CRI: 3000K / 90 CRI  
 Spacing Criteria (0°-180°): 1.28  
 Spacing Criteria (90°-270°): 1.28



### Illuminance at a Distance

Distance from Luminaire	FC at Nadir	Beam Diameter
4'	19.4fc	12"-6"
6'	8.6fc	18"-10"
8'	4.9fc	25"-1"
10'	3.1fc	31"-5"
12'	2.2fc	37"-7"

### Zonal Lumen Summary

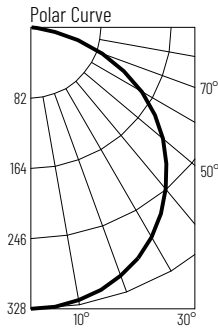
Zone	Lumens	% Luminaire
0-30	243	27.1
0-40	399	44.6
0-60	711	79.6
0-90	894	100
90-180	0	0
0-180	894	100

### Candela Table

Vertical Angles	Candela
0	310
5	309
15	300
25	280
35	251
45	212

### Test Information

Test Number: NTR1920R1  
 Part Number: NEFLINTW-R4MPW  
 Beam Spread: 115° Wide Flood  
 Lumens: 943lm  
 Wattage: 9.81W  
 Efficacy: 96lpw  
 CCT / CRI: 3500K / 90 CRI  
 Spacing Criteria (0°-180°): 1.28  
 Spacing Criteria (90°-270°): 1.28



### Illuminance at a Distance

Distance from Luminaire	FC at Nadir	Beam Diameter
4'	20.5fc	12"-7"
6'	9.1fc	18"-10"
8'	5.1fc	25"-1"
10'	3.3fc	31"-5"
12'	2.3fc	37"-8"

### Zonal Lumen Summary

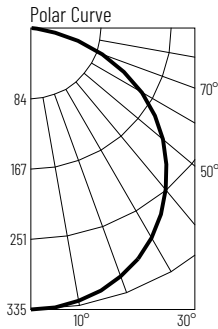
Zone	Lumens	% Luminaire
0-30	256	27.1
0-40	421	44.6
0-60	751	79.6
0-90	943	100
90-180	0	0
0-180	943	100

### Candela Table

Vertical Angles	Candela
0	328
5	327
15	317
25	296
35	264
45	224

### Test Information

Test Number: NTR1921R1  
 Part Number: NEFLINTW-R4MPW  
 Beam Spread: 115° Wide Flood  
 Lumens: 964lm  
 Wattage: 9.94W  
 Efficacy: 97lpw  
 CCT / CRI: 4000K / 90 CRI  
 Spacing Criteria (0°-180°): 1.28  
 Spacing Criteria (90°-270°): 1.28



### Illuminance at a Distance

Distance from Luminaire	FC at Nadir	Beam Diameter
4'	20.9fc	12"-6"
6'	9.3fc	18"-10"
8'	5.2fc	25"-1"
10'	3.4fc	31"-5"
12'	2.3fc	37"-7"

### Zonal Lumen Summary

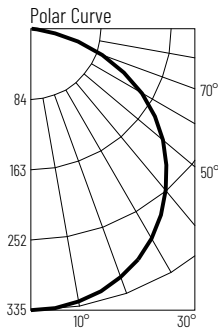
Zone	Lumens	% Luminaire
0-30	261	27.1
0-40	430	44.6
0-60	766	79.5
0-90	964	100
90-180	0	0
0-180	964	100

### Candela Table

Vertical Angles	Candela
0	335
5	333
15	323
25	302
35	270
45	229

### Test Information

Test Number: NTR1922R1  
 Part Number: NEFLINTW-R4MPW  
 Beam Spread: 115° Wide Flood  
 Lumens: 966lm  
 Wattage: 10.16W  
 Efficacy: 95lpw  
 CCT / CRI: 5000K / 90 CRI  
 Spacing Criteria (0°-180°): 1.28  
 Spacing Criteria (90°-270°): 1.28



### Illuminance at a Distance

Distance from Luminaire	FC at Nadir	Beam Diameter
4'	21fc	12"-6"
6'	9.3fc	18"-10"
8'	5.2fc	25"-1"
10'	3.4fc	31"-5"
12'	2.3fc	37"-7"

### Zonal Lumen Summary

Zone	Lumens	% Luminaire
0-30	216	22.4
0-40	361	37.4
0-60	746	77.2
0-90	966	100
90-180	0	0
0-180	966	100

### Candela Table

Vertical Angles	Candela
0	335
5	334
15	323
25	302
35	270
45	229