

WARNINGS AND CAUTIONS:

- **TO AVOID FIRE, SHOCK, OR DEATH; TURN OFF POWER AT CIRCUIT BREAKER OR FUSE AND TEST THAT POWER IS OFF BEFORE WIRING!**
- To be installed and/or used in accordance with appropriate electrical codes and regulations.
- If you are unsure about any part of these instructions, consult an electrician.
- To avoid overheating and possible damage to this device and other equipment, do not install to control a receptacle, fluorescent lighting, a motor- or a transformer-operated appliance.

WARNINGS AND CAUTIONS:

- Use with compatible dimmable LED, CFL bulbs, incandescent or 120V halogen fixtures only. For a complete list of compatible LED and CFL bulbs refer to www.leviton.com.
- When multiple bulbs are used with one dimmer DO NOT mix bulb types. All bulbs shall be either LED; CFL or incandescent. Using the same make/model of each bulb will enhance dimmer performance.
- **Use this device with copper or copper clad wire only.**

Tools needed to install your Dimmer

- Slotted/Philips Screwdriver Electrical Tape Pliers
 Pencil Cutters Ruler

Installing Dimmer by itself or with other devices

If installing Dimmer in a single device application, proceed with the **INSTALLING YOUR DIMMER** section. If installing Dimmer in a multi-device application, proceed as follows:

MULTI-DEVICE APPLICATION:

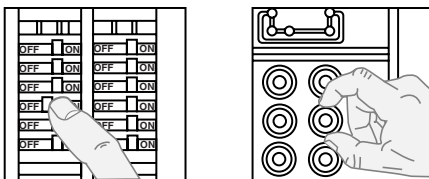
In incandescent multi-dimmer installations, the reduction of the dimmer's capacity is required. Refer to the chart for maximum load per dimmer. No derating is required for use in Dimmable CFL or dimmable LED multi-dimmer installations.

MAXIMUM LOAD PER DIMMER FOR MULTI-DEVICE			
Cat. No.	Single	Two Devices	More than 2 Devices
6672	600W	500W	400W

INSTALLING YOUR DIMMER

NOTE: Use check boxes when steps are completed.

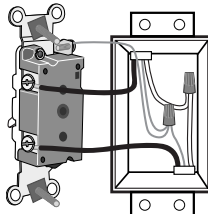
Step 1 **WARNING: TO AVOID FIRE, SHOCK, OR DEATH; TURN OFF POWER** at circuit breaker or fuse and test that power is off before wiring!



Step 2 **Removing existing switch:** Remove existing wallplate and switch mounting screws. Carefully pull switch from wall box. **DO NOT** remove wires attached to the switch at this time.

Step 3 **Identifying your wiring application (most common):**

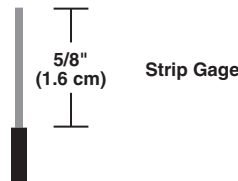
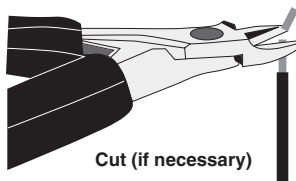
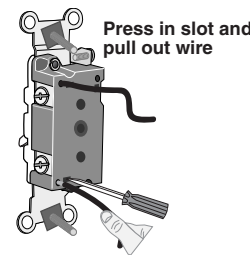
NOTE: If the wiring in the wall box does not resemble any of these configurations, consult an electrician.



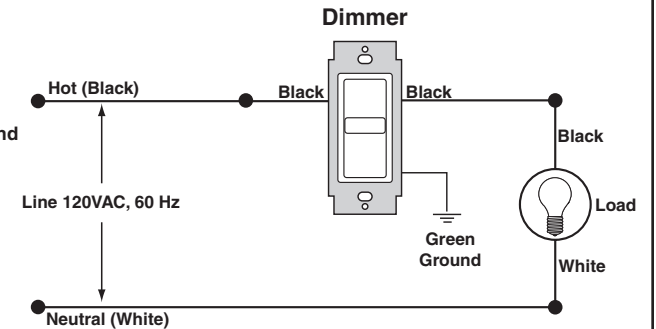
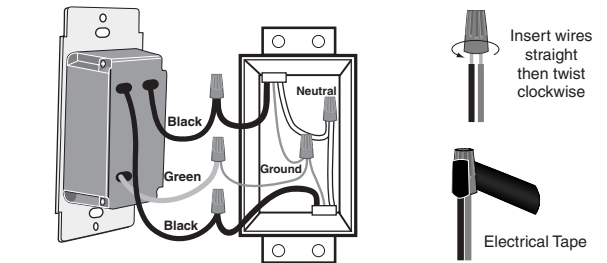
Single-Pole:
 Look at the back of your switch. If there are 2 wires connected to two screw terminals (not including a green or bare copper wire used for grounding), you have a Single-Pole switch.

Step 4 **Disconnecting switch wires and preparing wires:**

- Disconnect wires from screw terminals or Quickwire™ slots (shown).
- Pull off pre-cut insulation from Dimmer leads. Twist strands tightly together.
- Make sure that the ends of the wires from the wall box are **straight (cut if necessary)**.
- Remove 5/8" (1.6 cm) of insulation from each wire in the wall box (shown).



Step 5 **Single-Pole Wiring Application:**



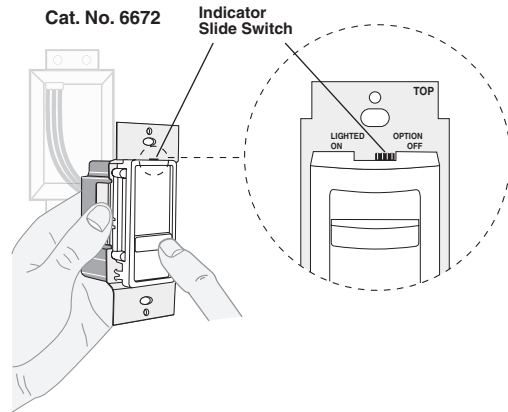
Connect wires per WIRING DIAGRAM as follows:

- Screw wire nuts on clockwise making sure no bare conductors show below the wire connectors. Secure each connector with electrical tape.
- Green dimmer Ground lead to Green or bare copper wire in wall box.
 - Black dimmer lead to any wall box wire removed from old switch.
 - Remaining Black dimmer lead to remaining wall box wire.
 - **Proceed to Step 6.**

Step 6 Testing your Dimmer prior to mounting in wall box:

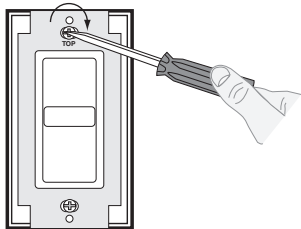


NOTE: Cat. No. 6672 is shipped with the indicator light disabled (OFF). If you want the light option (ON), with an insulated screwdriver slide the switch at the TOP of the frame to the left while facing the device before mounting wallplate.



- Restore power at circuit breaker or fuse.
- Carefully holding Dimmer as shown proceed as follows: Slide control lever up to highest position. Lights should turn ON to brightest level.

Step 7 Dimmer Mounting: TURN OFF POWER AT CIRCUIT BREAKER OR FUSE.



Installation may now be completed by carefully positioning all wires to provide room in wall box for dimmer. Mount dimmer into box with mounting screws supplied. Attach Decora® wallplate.

Step 8 Restore Power: Restore power at circuit breaker or fuse. Installation is complete.

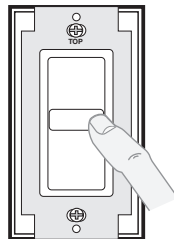


OPERATION

Optional locator light: The locator light illuminates the switch when the dimmer is the OFF position. To activate, slide the selector switch to the ON position.

NOTE: It is recommended the locator light should not be used when the dimmer is connected to dimmable LED or CFL bulbs. The locator light may flicker when connected to dimmable LED or CFL bulbs.

Cat. No. 6672



- ON:** Slide control lever up to turn lights ON at desired level of light.
- OFF:** Slide control lever all the way down until it clicks to turn lights OFF.
- BRIGHTEN:** Raise slider control lever.
- DIM:** Lower slider control lever.

TROUBLESHOOTING

- **Lights Flickering**
 - Lamp has a bad connection.
 - Wires not secured firmly with wire connectors.
- **CFL and LED flickers at low end of dimming range**
 - Increase the low end of the dimming range.
- **CFL or LED bulb flickers throughout dimming range**
 - Please refer to recommended dimmable LED bulbs and CFL bulbs at www.leviton.com.
- **Light does not turn ON**
 - Circuit breaker or fuse has tripped.
 - Lamp is burned out.
 - Lamp Neutral connection is not wired.

For non-standard wiring applications, refer to Wire Connector and Number of Conductors Chart

WIRE CONNECTOR / # OF COND. COMBINATION CHART

1- #12 w/ 1 to 3 #14, #16 or #18
2- #12 w/ 1 or 2 #16 or #18
1- #14 w/ 1 to 4 #16 or #18
2- #14 w/ 1 to 3 #16 or #18

For Technical Assistance Call: 1-800-824-3005 (U.S.A. Only)
www.leviton.com

DECORA is a trademark of Leviton Manufacturing Co., Inc. registered in the United States, Canada, Mexico and China.

FOR CANADA ONLY

For warranty information and/or product returns, residents of Canada should contact Leviton in writing at **Leviton Manufacturing of Canada Ltd to the attention of the Quality Assurance Department, 165 Hymus Blvd, Pointe-Claire (Quebec), Canada H9R 1E9** or by telephone at **1 800 405-5320**.

LIMITED 5 YEAR WARRANTY AND EXCLUSIONS

Leviton warrants to the original consumer purchaser and not for the benefit of anyone else that this product at the time of its sale by Leviton is free of defects in materials and workmanship under normal and proper use for five years from the purchase date. Leviton's only obligation is to correct such defects by repair or replacement, at its option, if within such five year period the product is returned prepaid, with proof of purchase date, and a description of the problem to **Leviton Mfg. Co., Inc. 201 North Service Road, Melville, N.Y. 11747, U.S.A.** This warranty excludes and there is disclaimed liability for labor for removal of this product or reinstallation. This warranty is void if this product is installed improperly or in an improper environment, overloaded, misused, opened, abused, or altered in any manner, or is not used under normal operating conditions or not in accordance with any labels or instructions. **There are no other or implied warranties of any kind, including merchantability and fitness for a particular purpose, but if any implied warranty is required by the applicable jurisdiction, the duration of any such implied warranty, including merchantability and fitness for a particular purpose, is limited to five years. Leviton is not liable for incidental, indirect, special, or consequential damages, including without limitation, damage to, or loss of use of, any equipment, lost sales or profits or delay or failure to perform this warranty obligation.** The remedies provided herein are the exclusive remedies under this warranty, whether based on contract, tort or otherwise.