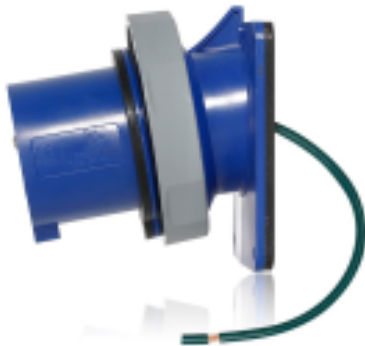


530B9WLEV



UPC Code : 078477921005

Country Of Origin : Mexico

LEV Series IEC Pin & Sleeve Inlet

30 Amp, 120/208 Volt 3-Phase, 4P, 5W, LEV Series North American-Rated IEC 60309-1 & 60309-2 Pin & Sleeve Inlet, Industrial Grade, IP66/IP67/IP68/IP69K, Watertight - Blue

LEV Series IEC Pin & Sleeve Devices are designed to simplify your installation, endure the harshest environments and improve safety and productivity:

Nickel-plated pins and sleeves are self-cleaning and corrosion-resistant

Superior watertight ratings including IP69K for washdown/outdoor applications and industry exclusive IP68 for long-term submersion

NSF certified sanitary design trusted for use in food & beverage facilities

Technical Information

Electrical Specifications

Amperage : 30 A

Current Interrupting : Certified for current interrupting at full-rated current and voltage

Dielectric Voltage : 3000V for 1 min.

Endurance : 2000 cycles total - 1000 cycles at Rated Current Voltage, 1000 cycles at no load

Horsepower Rating : 3 HP

Max. Voltage : 600V

Overload UL20 Test : 150% of rated current and 100% of rated voltage for 250 cycles

Phase : 3-Phase

Pole : 4

SCCR : 200kA

Temperature Rise : Max 30°C rise at full rated current (after overload)

Voltage : 120/208 VAC

Wire : 5

Environmental Specifications

Corrosion Resistance : Salt fog tested

Flammability : Rated V-0 (Contact Carrier), HB or better (Housing) per UL94

IP Rating : IP66, IP67, IP68, IP69K

NEMA Enclosure Type : 3R, 4X, 6P and 12

NSF : 14159-1, Hygenic Requirement for the Design of Meat & Poultry Processing Equipment

UV Resistance : UV stabilized F1 rated housings

Material Specifications

Assembly Screws : 303 Stainless Steel

Contact Carrier : Glass filled Nylon

Grommet/Gasket : NBR/Buna N

Housing : PBT

Terminal Screws : 303 Stainless Steel

Mechanical Specifications

Conductor Range : #10 AWG to #8 AWG

Crush Test : 250 lbs for 1 min after -25°C for 6 hrs

Hardware Head Type : Hex style socket screws for terminals, combination screws for all others

Impact : Drop from 30" 8 times after conditioning to -25°C, for 6 hours Drop from 72" after conditioning to -35°C, for 6 hours

Product Features

Clock Position : 9 o'clock

Color : Blue

Configuration : North American

Device Type : Inlet

Product Markings : Brand, UL, CE and environmental ratings molded in. Item number, ampacity, voltage, phases, HP, NSF on label

Series : LEV Series

Standards and Certifications

CE : CE certification

CSA : CSA C22.2 No 182.1-13 (Harmonized with UL 1682)

IEC Rating : 60309-1, 60309-2

NOM : NOM –ANCE standards

RoHS : RoHS compliant components

UL : UL 1686 C2, UL 1682

Warranty

Warranty : 5-Year Limited

Patents*

US10431922

*This list is provided for patent marking purposes only. A good faith effort is made to maintain the accuracy and completeness of this list. No legal inference should be drawn from the omission of a patent from this list.

SPECIFICATION SUBMITTAL

| | | |
|-------------------------------------|--|----------------------|
| JOB NAME: <input type="text"/> | CATALOG NUMBERS: <input type="text"/> | |
| JOB NUMBER: <input type="text"/> | <input type="text"/> | <input type="text"/> |

Leviton Manufacturing Co., Inc.

201 North Service Road, Melville, NY 11747

Telephone: +1-800-323-8920 · FAX: +1-800-832-9538 · Tech Line (8:30AM-7:30PM E.S.T. Monday-Friday):

+1-800-824-3005

Leviton Manufacturing of Canada, Ltd.

165 Hymus Boulevard, Pointe Claire, Quebec H9R 1E9 · Telephone: +1-800-469-7890 ·

FAX: +1-800-824-3005 · www.leviton.com/canada

Leviton S. de R.L. de C.V.

Lago Tana 43, Mexico DF, Mexico CP 11290 · Tel.: (+52)55-5082-1040 · FAX: (+52)5386-

1797 · www.leviton.com.mx

Visit our Website at: www.leviton.com

© 2021 Leviton Manufacturing Co., Inc. All Rights Reserved. Subject to change without notice.

Leviton has a global presence.

If you would like to know where your local Leviton office is located please go to:

www.leviton.com/international/contacts/

